

# Annual Report

April 2024 – March 2025



**Kent Safeguarding Children**  
multi-agency partnership

# Contents

<b>Foreword</b>	Page 3
<b>Headlines</b>	Page 4
<b>Kent Safeguarding Context in Numbers</b>	Page 5
<b>Implementing Working Together 2023</b>	Pages 6-9
<b>Priorities</b>	Pages 10-15
<b>Scrutiny, Challenge &amp; Assurance</b>	Pages 16-21
<b>What have we been doing?</b>	Pages 22-23
<b>Learning &amp; Improvement</b>	Pages 24-36
<b>Conclusion</b>	Page 37
<b>Appendices</b>	Pages 38-45
KSCMP Structure	Page 39
KSCMP Business Team Structure	Page 40
KSCMP Budget	Page 41
Financial Contributions	Page 42
Agencies within our Partnership	Pages 43-44
Kent Safeguarding Context data references	Page 45



# Foreword

## KSCMP Executive (Delegated Safeguarding Partners)

This year has seen further evolution of the Partnership's foundations both in response to Working Together 2023 and in preparation of the upcoming transformation work that will be required to respond to the Children's Wellbeing and Schools Bill, as well as other legislative and policy direction.

Working Together 2023 clarified responsibilities of Safeguarding Partners and the KSCMP. New or amended responsibilities included; introduction of the Lead Safeguarding Partner role, introduction of the Delegated Safeguarding Partner role, introduction of the Partnership Chair role, enhanced engagement of education at a strategic and operational level, and considering the role of Voluntary, Community and Social Enterprise and childcare and sports organisations in the Partnership. We published our revised arrangements in late 2024 which respond to these requirements, a summary of the changes is outlined in this report, but as the KSCMP Executive we particularly welcome the addition of education representatives in the strategic leadership of the Partnership, as well as considering how we can engage the large education sector in Kent.

We have also seen demonstrable evidence of progress because of previous improvements the KSCMP has made. Our practice reviews are now focused on identifying new learning and making change, with the Learning and Improvement Group proving to be an effective mechanism for embedding learning. This report also outlines key examples of how the Partnership's work is shaping local and national change. Achievements regarding children with asthma and further early years policy changes that have been informed by local learning are important milestones.

Over the next year, we will revise our Partnership priorities to respond effectively to national developments and emerging insights. We have already begun multi-agency work to assess the scale of change needed and to establish shared principles that will guide our efforts to build a connected system of Family Help. As we look to establish Family Help Teams and Multi-Agency Child Protection Teams, we remain committed to maintaining a safeguarding system that protects the safety and wellbeing of children in Kent. We will also continue to adapt and improve based on new learning from our Partnership activities.



**Sarah Hammond,**  
Corporate Director,  
Children, Young People  
and Education, Kent  
County Council



**Paul Lumsdon,**  
Chief Nursing Officer, NHS  
Kent & Medway



**Simon Wilson,**  
Assistant Chief Constable,  
Kent Police



**Susie Burden,**  
Executive Headteacher,  
Fulston Manor School



**Debra Hines,**  
Executive Headteacher,  
Joy Lane Primary School



**Kent Safeguarding Children**  
multi-agency partnership

# Key headlines: April 2024 to March 2025

## Key achievements



- Revised KSCMP arrangements
- Lead Safeguarding Partner meeting established
- Strategic representation from education identified
- 82% of Section 11 indicators fully met by Kent agencies

## Practice improvement



- 7 Local Child Safeguarding Practice Reviews published
- 2 learning briefings published
- 61 practice review recommendations considered at LIG\*
- 1 National Child Safeguarding Practice Review considered

## Learning and development



- 69 trainer-led courses
- 1,181 training attendances
- 3 new recorded webinars launched
- 2,089 recorded webinar completions
- 43,307 e-learning completions
- Cumulative Harm seminar held

\*Learning and Improvement Group



**Kent Safeguarding Children**  
multi-agency partnership

# Kent Safeguarding Context in Numbers

Decreasing	2024/25	Comparison to 2023/24	Increasing	2024/25	Comparison to 2023/24	Inline	2024/25	Comparison to 2023/24
Under 16s living in poverty <sup>2</sup>	47,273	-10.4% from 52,752	Missing episodes <sup>4</sup>	6,018	+5.5% from 5,684	Number of children aged 0-17 years <sup>1</sup>	348,300	+1.7% from 342,400
Looked after children (unaccompanied asylum-seeking children) <sup>3</sup>	458	-9.2% from 500	Ethnic minority pupils <sup>6</sup>	71,555	+4.6% from 68,270	Looked after children (Kent Citizen) <sup>3</sup>	1,443	-1.4% from 1,463
Children with a child protection plan who have a disability <sup>9</sup>	102	-11.8% from 114	Pupils with Special Education Needs <sup>7</sup>	44,874	+5.2% from 42,544	Total referrals to NELFT <sup>5</sup>	22,488	+0.8% from 22,308
Young People in Youth Justice <sup>10</sup>	165	-16.4% from 192	Children educated at home <sup>8</sup>	5,222	+22.0% from 4,073			
Children with a child protection plan <sup>11</sup>	1,151	-5.3% from 1,212	Young people who had involvement with Early Help – CSE <sup>12</sup>	351	+12.3% from 308			
Young people who had involvement with CSWS identified at high risk of child sexual exploitation <sup>12</sup>	497	-17.9% from 586	Referrals to Family Group Conferencing – families <sup>16</sup>	1,449	+15.3% from 1,228			
C and F assessments where a young carer was identified <sup>13</sup>	546	-8.1% from 590	Referrals to Family Group Conferencing – individuals <sup>16</sup>	2,289	+16.3% from 1,915			
Privately Fostered Children <sup>14</sup>	22	-18.2% from 26						
Domestic Abuse – Child Domestic Violence <sup>15</sup>	2,626	-21.8% from 3,199						
Domestic Abuse – Parent Domestic Violence <sup>15</sup>	5,986	-2.2% from 6,131						
Other Domestic Violence <sup>15</sup>	2,034	-6.9% from 2,174						

Please see appendix five for a list of data references.

# Implementing Working Together 2023



# Architecture Review

During spring and summer 2024 a second KSCMP architecture review was undertaken taking into consideration the time elapsed from the previous review in 2021 and national developments, such as the revised Working Together. The key areas of focus were: implementation of the 2021 review recommendations, Relevant Agency involvement in the Partnership, connectivity between the Executive and sub-groups, effectiveness of scrutiny and assurance through the Scrutiny and Challenge Group, role and efficacy of the Emerging Themes Group, current functioning of the health sub-group(s), Partnership connectivity and consideration of child exploitation at a strategic level, and, connectivity to other relevant strategic partnerships and forums.

Key findings included:

- In 2021 it was reported that the Partnership was not well understood, in this review it was found that whilst there has been significant improvement in the position of the KSCMP since that time, there remain challenges around the identity and 'brand' of KSCMP.
- Not all Relevant Agencies are engaged equitably across the Partnership, and expectations of those agencies are not understood by all. Additional social care providers were named as Relevant Agencies but not engaged in the Partnership.
- The first KSCMP Partnership Forum held in January 2024 was viewed as a positive step forward in providing a space for broader partners to hear from and feedback to the KSCMP Executive. There remains some feeling of a lack of connection between the Executive and sub-groups, with sub-group chairs not always clear on how their activity is reported and escalation routes to the Executive.
- The Scrutiny & Challenge Group had made significant progress since 2021, owing to the increased frequency of meetings, proactivity of the Chair, and development of robust assurance tools. There is some confusion about the role of members in providing accountability for their agencies and the sub-groups, rather than 'challenging' the KSCMP Executive. There is an opportunity to build on the group's momentum going forward.
- The Emerging Themes Group was established in 2022 to act as a horizon scanning function but has struggled to understand and realise its purpose. Members highlighted a lack of clarity and barriers to the group's efforts, including a lack of data or evidence from which conclusions can be drawn.
- There is a clear commitment and activity has already been commenced to establish dedicated strategic oversight of child exploitation in Kent, which aligns with the likely national direction and focus on this topic.



# Revised Partnership Arrangements

## Lead Safeguarding Partners

In line with Working Together 2023, we have worked with our Lead Safeguarding Partners (LSPs) to establish bi-annual meetings and communication channels for them to undertake their joint responsibilities. The first LSP meeting took place in October 2024, at which the LSPs considered and endorsed the revised Partnership arrangements, current KSCMP priorities, the Kent Support Levels Guidance (threshold document), and heard from the Independent Scrutineer.

## Revised Arrangements

As a result of both the second architecture review and the work to implement Working Together 2023, a range of actions and changes were agreed for the Partnership, culminating in the publication of revised [KSCMP arrangements](#), [Scrutiny and Assurance Framework](#) and [Practice Improvement Framework](#) in December 2024. Relevant Agency partners were consulted on the revised arrangements via the Scrutiny, Assurance and Audit Sub-group.

Key changes outlined in the revised arrangements include:

- Introduction of the Partnership Chair role, which is rotated amongst the KSCMP Executive.
- The KSCMP Scrutiny and Challenge Group was renamed the Scrutiny, Assurance and Audit Sub-group (SAAS) and has a revised terms of reference which better reflects the group's role, including ownership of progressing recommendations from audits, governance of the KSCMP strategic plan, and oversight of the KSCMP sub-groups.
- The Emerging Themes Group was disbanded as a KSCMP sub-group. Activity to horizon scan from policy continues to be undertaken by the KSCMP Business Team and identification of emerging risks will continue to be an item at sub-group meetings, as well as occurring through the data dashboard performance reporting to SAAS. An ability to convene a dedicated working group in response to specific emerging themes has been retained.
- The geographic size of Kent means it is impractical to name all Voluntary Community and Social Enterprise (VCSE) organisations, childcare and sports clubs in the Partnership arrangements. An existing action derived from an LCSPR will be taken forward to develop a communications strategy with third sector organisations, highlighting local pathways for guidance and referrals regarding safeguarding concerns. This work is anticipated to be undertaken in summer 2025.
- A KSCMP Child Exploitation Oversight Group has been established, with a remit including oversight of child exploitation across Kent, consideration of relevant exploitation related data and reporting, and monitoring the efficacy of strategies, tools and activities to respond to child exploitation in Kent. The group has held its first meeting in March 2025 and agreed terms of reference.



# Education representation in the Partnership

## Representation in Partnership Leadership

In recognition of Working Together's emphasis on ensuring education representation within the strategic leadership of the Partnership, two school leaders have been established as representatives on the KSCMP Executive Board. They provide a 'voice of education' to the Executive when making decisions about the strategic direction of the Partnership and will also attend the Lead Safeguarding Partner meetings to offer a similar perspective.

## Education Safeguarding Group

The KSCMP Education Safeguarding Group has met four times this year. Engagement in the meetings has been good. The group has discussed a range of topics linked to both practice reviews and the Partnership priorities, as well as having guest speakers from Ofsted and partner services. Members of this subgroup have also joined other relevant KSCMP sub-groups (such as the LIG) to provide a voice from education in broader Partnership activities. The group has also considered how it can contribute to the Partnership's priorities and benefit the Kent education sector as a whole. On page 12 detail can be found about a working group established to consider how settings can support the mental health and wellbeing of students.

## Newsletter

KSCMP produce a quarterly education newsletter following each of the KSCMP Education Safeguarding Group meetings. These disseminate information from the meetings as well as highlighting other key information relevant for education, including policy and training.

## Outreach

KSCMP Business Team members regularly attend other education Designated Safeguarding Lead network meetings to be able to share relevant updates and information from the Partnership. Headteacher briefing sessions were attended in winter 2024 to raise awareness of the Partnership and encourage more engagement with education.

## **What has the impact been?**

The Education Safeguarding Group has provided a space to consider education perspectives on safeguarding system matters. KCC Integrated Children's Services was able to use the group as a consultative forum when considering changes to the Front Door consultation telephone line. Engagement with the group enabled sharing of challenges from the Front Door, as well as understanding of the value provided to education settings, leading to a revised model being implemented.

The Partnership is already beginning to see increased awareness and engagement with education. When a vacancy arose in the Education Safeguarding Group membership, multiple requests to join were received, whereas previously it had been a challenge to secure attendees.

The KSCMP Education newsletter consistently receives significant views: May 2024 – **779 views**, July 2024 – **546 views**, November 2024 – **475 views**, February 2025 – **630 views**.



**Kent Safeguarding Children**  
multi-agency partnership

# Priorities



# Partnership Priorities

The 2024-26 KSCMP priorities are:

- **Mental health of children and young people:** Children to be supported in their social and emotional wellbeing and attunement and receive early intervention in line with their needs.
- **Impact of parent mental health:** Children not to be unsafe due to parent mental health needs.
- **Effective multi-agency working:** Professionals to be courageous and confident in multi-agency working, being able to share information and risk effectively.
- **Online safety:** Children to be supported to be safe online and be able to access advice and support where needed.

The [Strategic Plan](#) sets out what activity the Partnership expects to undertake and how progress will be measured. Delivery of the plan is monitored via the Scrutiny, Assurance and Audit Sub-group (SAAS) quarterly as well as the priority data dashboard, which outlines key data sets associated with the priority themes.

The one-year 'check-in' of the Strategic Plan highlighted that of the 31 actions outlined, 15 have been achieved and 12 are in progress. A further 2 actions have been discontinued owing to national legislative change, and 2 are yet to commence.

The following pages provide an overview of key activities for each of the priorities.



# Mental Health of Children and Young People

## Education Mental Health and Wellbeing Group

The Education Safeguarding Group decided to complete a piece of work around wellbeing and mental health resources for education, as although many resources exist, settings often struggle to access them, particularly when trying to access support or resources at a time of crisis. A working group has been established to decide what signposting resources would be produced and in what format. The working group has met several times, and work is underway with trial resources produced for some themes. In March 2025, the working group began to seek feedback on the trial resources from relevant education network meetings. The feedback was essential in helping to understand whether the materials were suitable and which themes were most needed.

## Training and resources

As part of the update to the KSCMP e-learning offer (see page 34) a new course 'Supporting wellbeing and emotional health in education' is available for multi-agency partners. A further Youth Mental Health First Aid course was held in 2024, and planning is underway to secure future provision of these courses in 2025/26. A new [page has been added to the KSCMP website](#) to signpost to services and resources to support children's mental health. A [Young Carers factsheet](#) was also developed which outlined the potential impact on children's mental wellbeing.

## Support services and pathways

Prior to being disbanded, the Emerging Themes Group sought an overview of relevant mental health services for children in Kent delivered by the Kent and Medway NHS Integrated Care Board (KMICB), to ensure parity across the county. Separately, in response to learning identified in a Kent LCSPR, the Learning and Improvement Group is actively monitoring an action for all relevant agencies to ensure staff are aware of and using formal screening and referral pathways for Autism Spectrum Condition. Learning had been identified that older children may not be being referred and that this had a further effect on their mental health. KMICB will be providing an update on the neuro-developmental referral and assessment pathways transformation, following which LIG will consider further actions required.

### What has the impact been?

Since becoming available on 1<sup>st</sup> September 2024, the 'Supporting Mental Wellbeing and Emotional Health in Education' elearning course has been completed **56 times**.

A further **9 professionals** completed Youth Mental Health First Aid training via KSCMP.

The Young Carer Awareness factsheet has been viewed **417 times**.



**Kent Safeguarding Children**  
multi-agency partnership

# Impact of Parent Mental Health

## Children as protective factors campaign

In response to identified learning that in some cases children were being routinely recorded and considered as protective factors for their parent's mental health, leading to potential risks to the child(ren) being overlooked, work has been underway to develop an awareness campaign spearheaded by a video. Throughout 2024/25 the LIG have assisted and overseen development of the video script and in March 2025 the final video was completed. Planning is now underway to develop supporting resources and host a launch seminar in June 2025.

## Considering wider family context in adult mental health services

In line with other actions set regarding this learning theme, Kent and Medway Partnership Trust (KMPT) undertook a significant piece of work internally with adult mental health services. The "Think Family" approach has been embedded to ensure that children's voices and lived experience are captured during contacts and child safeguarding is seen as a golden thread to professional's work. Activities included:

- Training KMPT champions to ensure "Think Family" is embedded at a local level.
- Provide consultation that support practitioners to "Think Family".
- Delivering supervision, case discussion, reflection and supported learning.
- Re-visit, consistent and persistent training, continuous discussion and reflection with a diverse and changing working force.
- A KMPT wide Patient Safety Learning Event with an external speaker addressing the issue of children not being seen as protective factors.
- An audit of adult safeguarding referrals to ascertain if impact of concerns on children is identified.

### **What has the impact been?**

Plans are in place to measure the impact of the video and will be reported in the 2025/26 Annual Report.

Findings of the KMPT audit will be shared at a future LIG meeting.



# Effective Multi-agency Working

## Escalation

Escalation has continued to be noted as a learning theme in practice reviews. The second Escalation Project findings were discussed by the Policy and Procedure Group, to consider how assurance can be provided on the use of the policy. It was agreed the group will consider findings from the 2024 Section 11 audit on this topic, to inform what, if any, further work is required.

## Information Sharing

Information sharing has also continued to be noted as a theme in practice reviews. The KSCMP website has a dedicated page regarding information sharing which has been updated to provide greater clarity on local information sharing protocols, as well as drawing on Working Together 2023. The KSCMP published an [‘information sharing to safeguard children’](#) factsheet which provides practical considerations for professionals.

## Difficult Conversations

In recognition that having difficult conversations has also been a frequent theme in practice reviews, the KSCMP developed and published a [‘courageous and challenging conversations guidance and tool’](#). It is designed for practitioners and managers to assist them in understanding the importance of difficult conversations and approaches to them and provides a tool to aid planning for those conversations.

## Good Practice Examples

In order to recognise good practice, as well as areas for improvement, a range of anonymised good practice examples of multi-agency working identified in practice review processes has been developed. This will be published on the KSCMP website and used to support training materials.

## LCSPR protocol

The Partnership has developed an LSP and Executive LCSPR Protocol to ensure clarity in relation to the obligations, accountabilities and decision-making responsibilities incumbent to all parties during the practice review process.

### What has the impact been?

The information sharing to safeguard children factsheet has been viewed **767 times**. Several other partnerships have requested permission to share or reference the KSCMP factsheet within their own local resources and networks.

The courageous and challenging conversations guide has been viewed **1,725 times**.



**Kent Safeguarding Children**  
multi-agency partnership



# Online Safety

## Policy

In recognition of the Online Safety Act and other legislative change, the Policy and Procedures Group undertook a horizon scanning activity, to assess the range of change required to local policies and procedures. A series of policies have been updated to specifically reference implications of the Online Safety Act, for example the new cyber-flashing offence, and to ensure risks related to Artificial Intelligence technology are also considered. A revised Safer Professional Practice with Technology guidance, Responding to Nudes and Semi-Nude Image Sharing guidance, and Online Safety guidance have been published.

Members of the Policy and Procedures Group will be reporting on how they have shared these documents within their organisations, alongside an overview of if/how their internal policies and assessment templates reference talking to children about their online usage, in order that professionals can capture concerns and risks for the children they are working with. This follows learning in practice reviews which identified that risks to children through online activity were not well understood or captured. Understanding what expectations exist in current assessments will enable the Partnership to consider whether further guidance or improvement is required in response to this learning.

## Training and resources

A further 5 sessions of the commissioned Online Safety training have been held for multi-agency professionals in this year as part of the Partnership Learning and Development programme. To mark Safer Internet Day 2025 the KSCMP produced a themed bulletin making use of the Safer Internet Day resources and launched a [new webpage](#) which provides links to a range of online safety resources for children and young people.

### What has the impact been?

In 2024/25 **75 professionals** have attended the Online Safety training course. Of the attendees 65 have completed the course feedback form which indicates:

- **100%** of respondents said they either agreed or strongly agreed that course was **engaging and interesting**
- **100%** of respondents rated their level **of knowledge as a 3 or above** (in a scale where 1 is low and 5 is high) after attending the training.
- **100%** of respondents said they either agreed or strongly agreed that they **had improved knowledge** after attending the training.

Comments by respondents included:

**“The course covered very important topics and gave fresh perspective on supporting people”**

**“It was very interesting and made me think about how I approach situations”**

**“Excellent advice provided, which sadly I needed to put into practice the same week”**



**Kent Safeguarding Children**  
multi-agency partnership

# Scrutiny, Challenge and Assurance





# Independent Scrutineer Evaluation

Over the past year the KSCMP has built on the successes and recommendations outlined in the previous annual report, further refining its structures, strengthening its learning culture, and addressing new challenges posed by emerging legislation. Working Together to Safeguard Children 2023 defined the Lead Safeguarding Partners (LSPs) and this year saw their inaugural meeting. The Partnership undertook an architecture review measuring the impact of the structural changes embedded in previous years. The review involved engagement with the wider partners to understand what progress had been made and where further change is required. As a result key changes have already taken place to further streamline business and improve efficiency.

The Partnership continues to improve its strategic planning and governance structures, building on the streamlined approach adopted last year. Notable achievements include:

- **Refined sub-group structure:** as a result of the architecture review the removal of the Emerging Themes Group was agreed, as it was felt that this could be achieved alternatively, overseen by the Scrutiny, Assurance & Audit Sub-group. All the groups are now more purposeful and targeted. Their remits have been clarified further, allowing each to focus on specific safeguarding priorities (e.g. child exploitation, learning and improvement, education). This clarity has helped reduce overlap and strengthened accountability. The Health Safeguarding Group remains in abeyance, and this is an issue to resolve in the coming year. It is vital that the role of Health is clearly established within the Partnership, if not through their own group, then lines of communication and accountability must be agreed.
- **Scrutiny and Challenge Group impact:** this was identified as an area where further improvement could be achieved, leading to the evolution from Scrutiny and Challenge to the Scrutiny, Assurance and Audit Sub-group, providing a clear line of communication between the sub-groups and the Executive. Meeting regularly, this group has continued to examine key areas in depth, such as the accountability and progress of sub-groups, multi-agency audits, the assurance framework and critical operational matters such as the impact of other local area placements on sufficiency of placements for Kent children. The increased flow of data has enhanced the group's capacity to challenge the sub-groups and wider Partnership, and support the Executive, ensuring decisions are evidenced-based and timely. The strengthening of scrutiny and assurance will continue during the next reporting year.
- **Executive Board meetings:** the regular meetings have become more embedded over the last year, with time allocated for strategic discussions on particular themes. Attendance has improved and these meetings now facilitate comprehensive debate on priority issues. This has enabled the Partnership to dedicate more time to exploring how best to respond to emerging policy and legislative changes, including the National Framework and the Multi-Agency Child Protection Teams as set out in the draft Children's Wellbeing and Schools Bill.
- **Multi-agency audit programme:** building on last year, the programme has been successfully embedded. Agencies are increasingly transparent about their performance, enable the Partnership to address gaps swiftly. Findings from audits have directly informed practice updates, demonstrating a tangible link between scrutiny and operational improvement. This was evident in the Section 11 audit carried out jointly with Medway Safeguarding Children Partnership at the end of 2024.

# Independent Scrutineer Evaluation (cont.)

- Data dashboards: these are now fully operational and allow both the Executive Board and SAAS to identify trends and patterns. This data-driven approach will lead to more proactive safeguarding strategies and quick adaptation to emerging risks.

The KSCMP has maintained its commitment to creative dissemination of lessons from LCSPRs. Campaigns such as the EatSafe initiative – originally developed after a tragic choking incident – have continued to receive positive local and national attention. Father Inclusive Practice has also remained a focal point, with ongoing training to support agencies in embedding this approach.

From the update to Working Together and the inclusion of education within the Executive, the Partnership has identified 2 strategic leaders from with education who sit on both the Executive Board and LSP meeting. The Education Safeguarding Group has stronger representation from early years, further education, and specialist providers. This broader engagement has facilitated richer discussions around issues such as elective home education, as well as the integration of updated statutory guidance. The group is well positioned to respond to the forthcoming Children's Wellbeing and Schools Bill. The strengthening of the voice of education within the Partnership will be an area of focus for the coming year.

Whilst the Partnership has strengthened the involvement of children and families in LCSPRs, it is yet to establish a robust mechanism for capturing the perspectives of children and families at a strategic level. The updated Working Together emphasises the need for direct involvement of service users in shaping policy and practice. Developing a formal framework for gathering and integrating these views into strategic discussions should remain a priority that requires progression.

All agencies continue to face recruitment and retention pressures, which can undermine the consistency of safeguarding responses. The Partnership's risk register correctly identifies these staffing issues as a significant threat the effectiveness. Public sector funding constraints have intensified, and partner agencies are under growing pressure to make cost savings. These challenges risk reducing frontline capacity if not carefully managed. The Partnership must monitor the cumulative effect of budget cuts on safeguarding services, ensuring that vital functions are maintained.

The introduction of new elements in the Children's Wellbeing and Schools Bill reforms and potential further updates to Working Together require continued vigilance. Adapting policies, training, and multi-agency protocols to remain compliant will demand sustained commitment from all partners. Maintaining momentum on operational improvements while integrating these legislative changes will be critical.

**Samantha Haspell, KSCMP Independent Scrutineer**

# Section 11 Audit 2024

Section 11 of the Children Act 2004 places a statutory responsibility on key agencies and organisations to have due regard to the need to safeguard and promote the welfare of children in discharging their functions. Agencies are required to complete a full Section 11 (S11) self-assessment on a biennial basis. A total of 52 partners completed the full audit tool across Kent and Medway in 2024, with 39 being Kent partners.

Following the 2022 Section 11, Kent and Medway Safeguarding Children Partnerships carried out a joint review and implemented some changes. The proposed changes were included in the 2023/24 [KSCMP annual report](#).

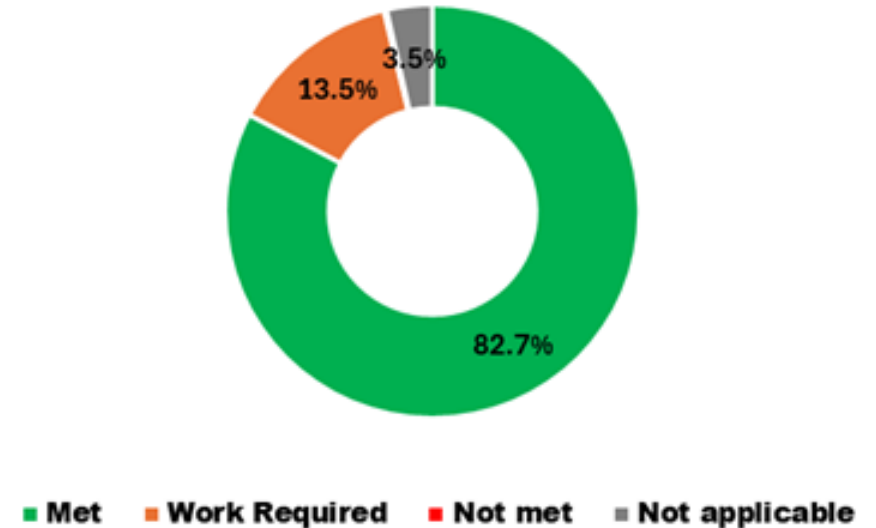
Alongside the audit, staff from partner agencies completed S11 surveys which allowed better triangulation of the information from the audits, surveys and panel meeting information. As in 2022, the S11 report included a detailed analysis of the self-assessment audit grading by geographical area, organisation type and standards level, as well as key findings and recommendations. An 'Emerging Themes and promising practice, Kent and Medway 2024' briefing was produced to help focus on good practice. It highlighted themes that were found to be weaker across the audits and signposted to relevant training and information.

The chart to the right shows overall completions of the S11 indicators in the 39 Kent agencies self-assessments.

Individual agencies retain responsibility for ensuring S11 compliance. Following the audit, each agency has an action plan to enable them to move forward with standards which were graded as not met or work required. Four key areas were highlighted for future development:

- Kent Escalation and Professional Challenge Policy and knowledge of procedures
- Safer Recruitment procedures and knowledge of the LADO
- Child's voice being included in service design (although this had improved since 2022)
- Assessing the impact of training, reviewing training and the recording/following up of outcomes regarding referrals.

Kent Partnership agencies (39 audits)



## What has the impact been?

- Understanding of common areas of need across the safeguarding children system in Kent.
- LADO training planned and shared with S11 partners.
- Opportunities for future discussions and work regarding escalation planned for 2025, linked to the KSCMP priority of effective agency working.
- The LIG has scheduled an item to look at findings related to Child's Voice to shape further work.



**Kent Safeguarding Children**  
multi-agency partnership

# Multi-agency Audits

## Cannabis policies, procedures and guidance audit

Following the findings from the [KSCMP Harm to Under 2s study](#), where cannabis use was shown to have been a more prevalent factor in Kent than in national case learning, an audit of multi-agency policies and procedures relating to cannabis or working with parents who use cannabis was planned. The audit specifically aimed to identify which agencies had specific cannabis policies (rather than just wider substance misuse) and whether any agencies had procedures or guidance for professionals. The information was sought from partners and relevant agencies, but it became clear that no agencies in Kent have policies solely focused on cannabis use and very little was currently in place.

Many agencies who responded with information for the audit indicated that they would welcome guidance or policy and would be willing to implement anything KSCMP produced.

## Elective Home Education (EHE)

Following publication of the Child Safeguarding Practice Review Panels 'Safeguarding Children in Elective Home Education' report in May 2024, benchmarking was undertaken to identify common themes between Kent cases and the national picture. Despite the far small number of Kent cases, a similar picture was noted to the national in terms of proportion where there was parental ill health and domestic abuse, as well as of gender and age.

The EHE work in 2023/24 produced resources to improve awareness and in Spring 2024 an EHE recorded webinar was also produced. KSCMP carried out a follow up survey in November and December 2024, allowing time for the resources to be embedded, to see if there had been an impact on the knowledge of professionals.

The 2024 had 250 responses from a wide range of partners. It showed, as per previous surveys and the Child R Serious Case Review, that there remain misconceptions about EHE. Many people did not have a good understanding of the role of the KCC EHE Team, with some continuing to believe they have more power/authority that they do. Some respondents thought that if a child is electively home educated, they must be known to the local authority. Respondents who had access the KSCMP resources did have higher knowledge scores than those who had not, scoring 5.66 compared to 4.90.

### **What has the impact been?**

The learning from the audit both in terms of lack of existing policy and guidance, and willingness of agencies to engage regarding working with cannabis, has fed into the scope of a cannabis awareness campaign. A multi-agency working group has been established to develop better understanding of issues faced in practice and produce campaign messaging and resources.

### **What has the impact been?**

Those that had accessed the KSCMP EHE resources had a higher knowledge than those who had not, however the survey showed that only 24% of respondents had accessed them. This shows more promotion is needed of the resources.

The SAAS considered the findings in March 2025 with a recommendation for single agencies to promote the materials.

Since publishing the EHE factsheet has been viewed **2758 times** and the EHE Guidance for Professionals **1889 times**. The recorded webinar has been completed **132 times** in 2024/25.





# Multi-agency Audits (cont.)

## EatSafe survey

Following the launch of KSCMP's EatSafe campaign in 2023 work has been undertaken to gather feedback to inform evaluation of the effectiveness/reach of the campaign. A survey was carried out to obtain feedback from attendees of the EatSafe launch, those who have completed EatSafe training, and those who have downloaded or considered using the EatSafe resources.

113 responses were received to the survey of which 54.9% (62) respondents were from education settings, and 56.6% were aware of the campaign. 33 of the 64 respondents who were aware of the campaign had attended the launch and 100% found it helpful. 71.8% of those who were aware of the campaign had used the resources and listed many positive about them. The most used resource highlighted was the guidance for settings. Respondents were asked if they were likely to recommend the resources to someone else. Many respondents (61%) gave a 10 (extremely likely) to recommend, 88% gave a rating of 8 or higher.

## Training Impact: Information Sharing & Triangulation

The purpose of the audit was to find out if KSCMP training had made a positive difference to practitioners who completed it and their practice. The focus of this audit was to understand whether practitioners felt the training had improved their knowledge relating to 6 key learning themes highlighted for development within our practice review work. The learning themes were; recording and storing information, cross-agency information, law and guidance regarding information sharing for child safeguarding, consent and information sharing, triangulation and professional curiosity, and, following up on referrals or outcomes.

Accurately assessing impact of our training has been a challenge. The proportion of training participants who complete feedback is small. For those audit a survey was sent to a number of participants who had completed selected courses, however the response rate was only 11.8% (28 respondents, making it hard to draw meaningful conclusions.

Responses were generally positive about the benefits of completing KSCMP training. For example, being able to meet other professionals, refreshing knowledge and increasing confidence.

Discussions have been held at SAAS about how more meaningful feedback and increased response rates can be gathered.

### **What has the impact been?**

Respondents highlighted that the EatSafe resources had led to a change in their practice, a better awareness and understanding related to eating safely, and a change to policies and procedures. Comments include:

**"It helps us know what age and what stage the child is at of eating. To keep them safe... We implemented a new safe eating policy and made changes to our settling in paperwork. We have developed our own eat safe policy for EYFS based on this training."**

**"It has made the staff be more aware of how they are preparing snacks and the food that they are serving. It highlighted the need to be extra vigilant and sparked us to come up with some more exciting snacks we could prepare for the children who are in the very early stages."**

### **What has the impact been?**

85.7% of respondents said that KSCMP training had changed their practice for the better.

Some specific examples were given to how practice had been improved by attendees of the 'Learning from Baby T: Exploring Safer Sleep' training. These included being more conscious to ensure agency checks are undertaken and knowing the importance of checking a parents' understanding of what has been explained rather than assuming that because they have been given advice, it will be followed.



**Kent Safeguarding Children**  
multi-agency partnership

# What have we been doing?



# Work of the Partnership

## JTAI benchmarking: Serious Youth Violence & Exploitation

Following the publication of the Joint Targeted Area Inspection (JTAI) framework to consider the response to serious youth violence and exploitation, the Partnership undertook a local benchmarking exercise to understand our own position. The benchmarking found that whilst locally there were clear structures for the response to serious youth violence, and good operational pathways for the recognition and response to child exploitation, there was a lack of clarity about strategic oversight of child exploitation. The findings of the benchmarking informed a line of enquiry for the KSCMP architecture review.

## JTAI benchmarking: Domestic Abuse

Following the publication of the JTAI framework to consider multi-agency response to child who experience domestic abuse, the Partnership has commenced a local benchmarking exercise to understand our own position. The work has been underway throughout early 2025 and is due to conclude in summer 2025, reporting into SAAS. The work has included collating a strategic overview of local processes, considering available data, and a multi-agency case audit.

## Childs Voice Project

An initial project has been delivered to assess good practice and the various mechanisms that could be used to develop an approach that best works for children in Kent. A working group is being convened to triangulate statutory requirements, national, regional and local best practice and to 'stock take' current mechanisms at single agency disposal to obtain the Voice of the Child. The group will consider recommendations about steps that should be taken to address this gap based on the information gleaned.

### **What has the impact been?**

The KSCMP's strategic oversight of child exploitation was a key line of enquiry in the architecture review (page 7) and led to the establishment of the KSCMP Child Exploitation Oversight Group. The findings of the benchmarking have informed development of the terms of reference and scope of that sub-group.



**Kent Safeguarding Children**  
multi-agency partnership

# Learning and Improvement



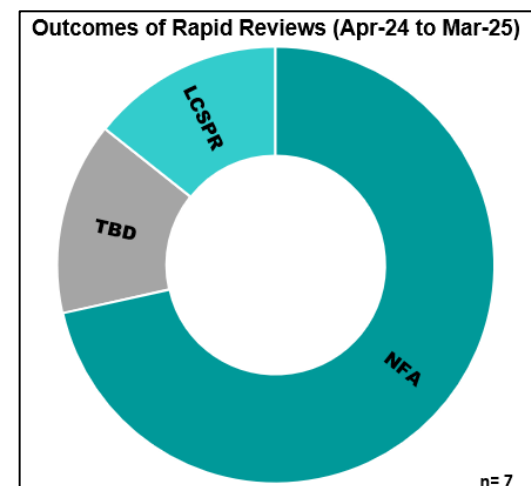
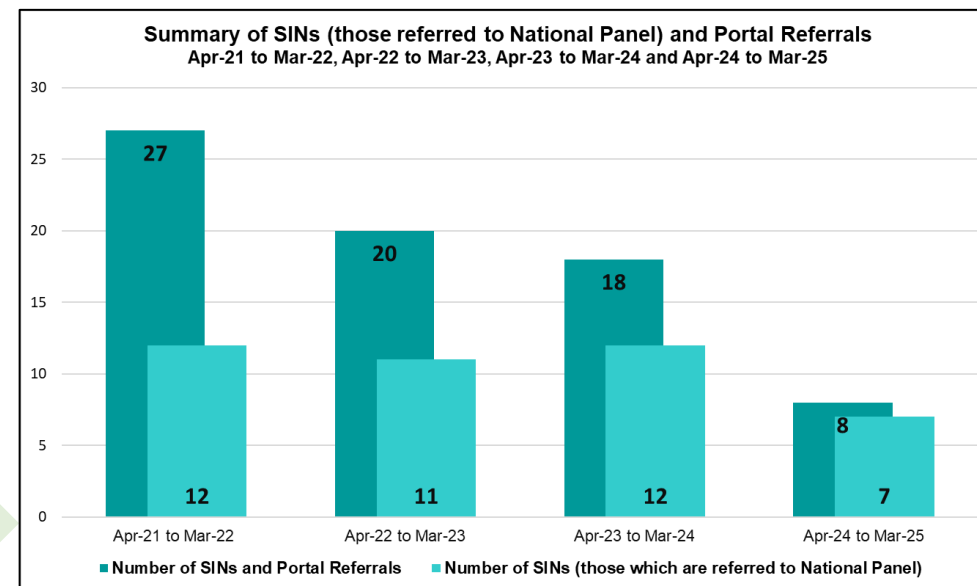


# Serious Incident Notifications

The KSCMP continues to track portal referrals and Serious Incident Notifications (SINs). Portal referrals can be made by any agency wishing to highlight a serious incident for consideration of notification. SINs are those cases which are notified to the Child Safeguarding Practice Review Panel (CSPRP) and go on to have a Rapid Review. The summary chart to the right illustrates the numbers of each. It should be noted that a SIN or portal referral may be for more than one child but will be counted as only one notification/referral.

The yearly comparisons show that the total number of referrals were down in 2024/25 compared to the previous three years (8 compared to 18 in 2023/24, 20 in 2022/23 and 21 in 2021/22). 7 SINs were submitted to the CSPRP. 4 of the notifications came from the 8 referrals in 2024/25, however the 3 came from those that were referred in 2023/24.

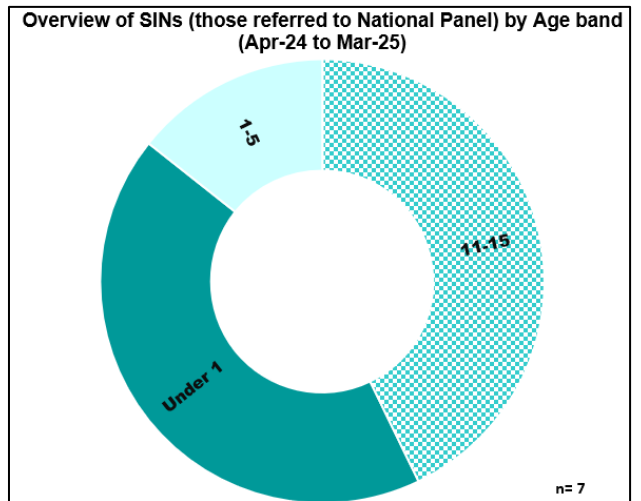
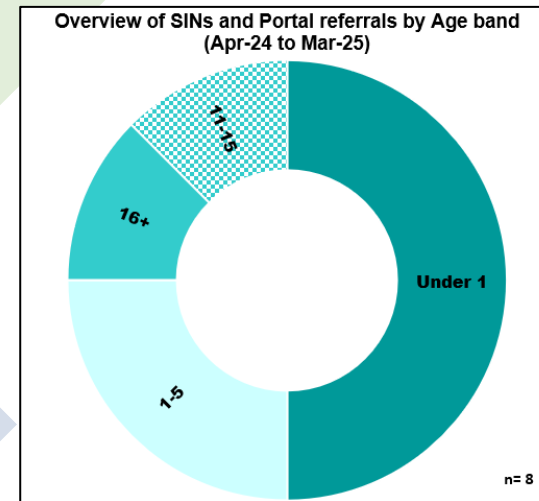
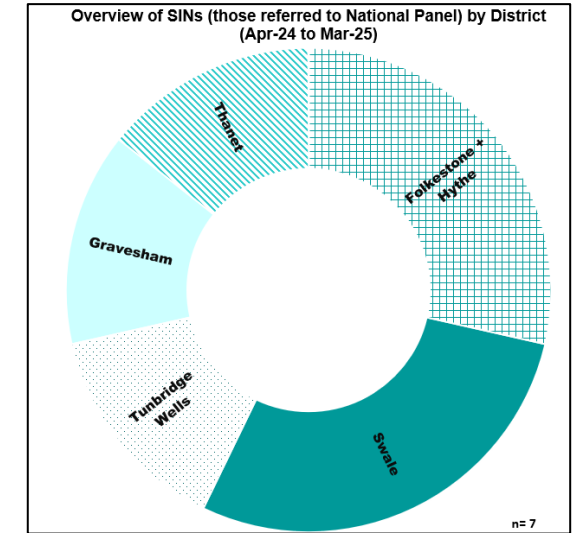
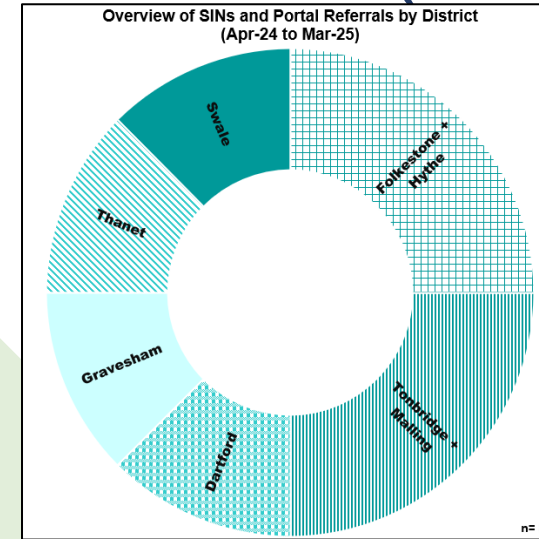
The bottom chart shows the outcomes from rapid reviews for the 2024/25 reporting period. For all rapid reviews that do not progress to a LCSPR (noted as 'NFA' here) an action plan and learning summary is produced and the actions are tracked to completion. 1 rapid review whose notification was in March 2025 remains pending (at the time of writing). An extension was agreed due to the complexity of the circumstances and the number of partnership areas involved. There has also been a decrease in the proportion of rapid reviews proceeding to an LCSPR. Owing to 1) improved tracking of learning themes which avoids multiple leading to similar recommendations and 2) the increased quality and breadth of rapid reviews, meaning more detailed and better-quality learning is identified earlier, enabling the rapid review action plans to bring about required change, without the need for a LCSPR. This shift has enabled the Partnership to focus resources on implementing recommendations and learning.



# Serious Incident Notifications (cont.)

The top two charts show the geographic distribution of SINS, and overview of SINS and the portal referrals in total. Folkestone and Hythe, and Tonbridge and Malling had the most SINS and portal referrals during 2024/25. However, Folkestone and Hythe, and Swale had the most SINS made to the CSPRP in 2024/25 (this is partly due to those notifications which stemmed from referrals made in 2023/24).

The bottom two charts show the split of SINS and portal referrals by age band of the child involved. Where a SIN or portal referral had more than one child identified, the youngest age child has been represented in these charts. The age distribution of Kent SINS is similar to the national picture for 2024/25, with under 1s the most notified, and other notifications for 1–5-year-olds and 11–15-year-olds. Compared with 2023/24 there was an increase in the number of referrals for 1-5 year olds.



# Local Child Safeguarding Practice Reviews

Between April 2024 and March 2025 the KSCMP published 7 LCSPRs and 2 learning briefings.

## Iman

Iman's review, involving 3 Partnership areas, focused on services provided to young parents with known vulnerabilities. Key themes include assessment of risk and decision making, cultural competence, and cross boundary communication and information sharing. It highlighted to the Child Safeguarding Practice Review Panel the fragility of legislative support and local housing practice to support care leavers as they transition to independence.

## Marshall

Marshall's pregnancy and birth were both concealed, and his death triggered a review considering the complexities of working with large families, father inclusive practice, response to concerns raised by family members, and working with individuals with a history of avoiding or misleading professionals. A learning briefing was also produced.

## James

James died shortly after his birth at home. His LCSPR identified some multi-agency professionals lack knowledge and understanding around the differences between learning disability and learning difficult, how to confirm if either are identified, what it means for practice when they are, and how to access specialist support.

## Jasper Red

Jasper Red completed suicide age 17 having experienced multiple forms of abuse and deterioration in his mental health. The 3 Partnership areas involved built a picture of cumulative harm, with recommendations for more effective safety planning, and consideration of children's vulnerabilities in the context of parental mental ill-health.

### **What has the impact been?**

Frontline professionals involved in these reviews have shared that events encouraged them to consider other young people from different perspectives and has informed immediate reflection and change in their practice, including use of the Escalation and Professional Challenge policy.

The LCSPR process has highlighted where stronger links can be made with the Coroners' office and Child Death Review processes. A focus in the coming year is to explore and strengthen these links and information flow.

Jasper Red's review inspired a cumulative harm seminar (see page 33).

All reviews have informed the activity of the Learning and Improvement Group (see pages 31-32).

# Local Child Safeguarding Practice Reviews (cont.)

## Anonymous LCSPR

KSCMP were supported by one of the children to understand their experience of family life and support from services prior to their sibling's death. The review explores how their lived experiences had been sought, understood and responded to, including when parents' declined intervention. It also considers the multi-agency response to a rapid deterioration in a child's mental health and to the impact of suicide upon friends, peers and the wider community.

## George and Oliver

George and Oliver's review focuses on identification and response to controlling and coercive behaviours and parental alienation. It also considers exploration of parental mental health in the context of private law proceedings, and more broadly, professionals' understanding of private law and the impact on children, particularly when assessing risk following a court ordered change in care arrangements.

## William

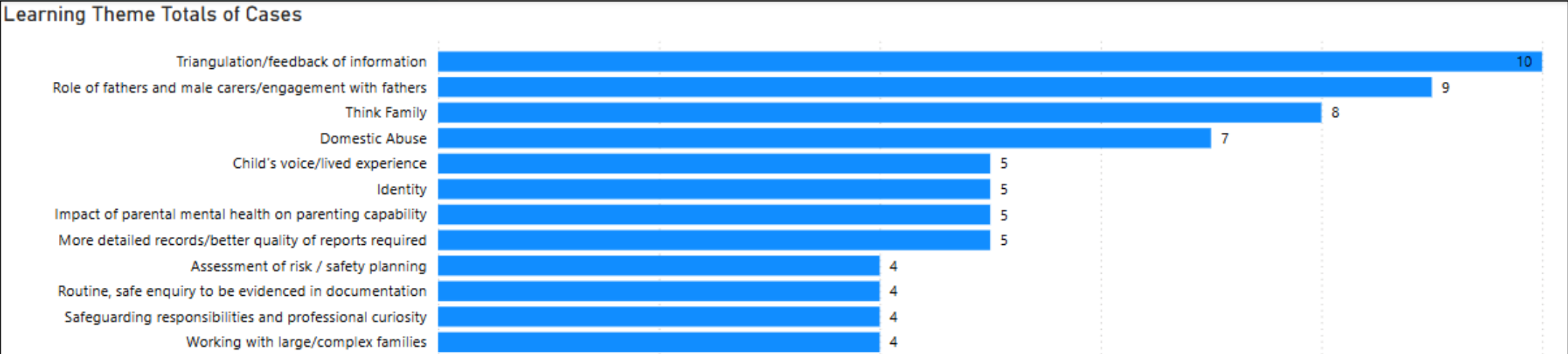
William's review completed in 2023 explores the effectiveness of multi-agency support offered to a young, single mother during the Covid-19 pandemic. Its recommendations include a piece on shared multi-agency understanding, expectations and effectiveness of risk and hazard flags on systems.



# Learning Themes

## Learning Themes Dashboard

Learning themes are monitored, and new themes are added after a rapid review has occurred. The most common themes are looked at over time and the dashboard is being used to monitor impact when training or information sessions have been held relating to the identified themes. The most common learning themes (for rapid reviews since September 2022) can be seen in the chart to the below.



This shows that currently ‘Triangulation/feedback of information’ has been noted as a theme in 10 rapid reviews. ‘Role of fathers and male carers/engagement with fathers’ is the second most common theme and has been noted in 9 reviews since 2022. In June 2024 it appeared that there had been improvement in regard to the role of fathers’ theme, as it had not occurred as a learning theme in the most recent quarterly reporting of this dashboard, however it has returned as a theme in more recent rapid reviews. The SAAS has considered this reporting and will be considering an impact audit on the father inclusive training in June 2025 to inform next steps.

## Collaborative learning

The Partnership has worked in collaboration with Kent Community Safety Partnership and Kent and Medway Safeguarding Adult Board to understand learning themes which cross-over to children from Domestic Homicide Reviews/Domestic Abuse Related Death Reviews and Safeguarding Adult Reviews.

In February 2025 KSCMP took part in a joint event “DHR and LCSPR Webinar – Parental Conflict and Domestic Abuse: Sharing the learnings with Kent and Medway’s frontline practitioners”.

# National Child Safeguarding Practice Reviews

The KSCMP recognises the importance of considering and responding to learning from National Child Safeguarding Practice Reviews, as well as our local reviews. We have agreed that in future LIG will be responsible for considering national reviews and coordinating a response to the learning and recommendations they set out in future, starting with the recently published national review into child sexual abuse within family environments.

## Children with disabilities and complex needs in residential settings

In response to phase two of this national review, which asked that Partnerships considered a number of key points in their regular reviews of safeguarding arrangements, a matrix was developed to map the considerations which the Safeguarding Partner agencies provided a response to. The responses were collated to understand the local position and identify local challenges and was considered by SAAS in December 2024.

Key challenges identified included unfit legislation, joint funding arrangements, the impact of resource constraints on multi-agency working, a lack of neurodiversity expertise when arranging placements, and information sharing via the Kent and Medway Care Record. The primary issue identified however was insufficient placement capacity within Kent as a result of the high proportion of Other Local Authority (OLA) placements into Kent, which has an impact on the availability of placement for Kent children, as well as creating additional demand onto local services and resources.

## Child Sexual Abuse within family environment

This recently published review was considered by the KSCMP Executive in early 2025, where it was agreed that LIG would coordinate the development of an action plan in response to the findings and recommendations. Given the findings in relation to professionals' knowledge and confidence to respond to child sexual abuse, this has also been included as a key theme in the ongoing Training Needs Analysis (TNA), to understand what our existing KSCMP offer is and what gaps may exist. Both the LIG response to the review and the TNA will be presented to the Executive later in 2025 for their oversight and assurance and reported in our 2025/26 annual report.

### **What has the impact been?**

The SAAS recognised the significance of the issue of local placement sufficiency being impacted by OLA placements and escalated this to the KSCMP Executive. The KSCMP Executive considered this in January 2025 and will write to the Department for Education to outline the challenges being experienced.



**Kent Safeguarding Children**  
multi-agency partnership



# Learning and Improvement Group

The KSCMP Learning & Improvement Group (LIG) continues to ensure practice review learning is disseminated and embedded throughout the Partnership. Key agency representatives offer insight into how recommendations can be translated into action in a meaningful and achievable way for their organisation and commit to owning and following up implementation and measuring impact.

Updates and sign off are captured in the recently developed PowerBI tracker, providing members with a real time account of their organisation's performance against actions agreed. LIG has also developed and agreed the use of a case matrix, which assists in the prioritisation and timetabling of reviews for consideration. The matrix enables the Partnership to respond to learning of particular relevance at any given time, be it new and emerging themes, or repeat issues that previous work has not gone far enough to address.

In 2024/25 the group realised its commitment to increased meeting length, recognising its crucial role in Partnership activity relating to system change. This is evidenced by more than double the number of actions marked complete on the last year. The proactive culture and attitude of members was recognised by the Scrutiny, Assurance and Audit Sub-group, along with the LIG's contribution towards Partnership priorities.

## What has the impact been?

During 2024/25 LIG considered **9 practice reviews** generating **61 recommendations**. Whilst **104 actions** were set, **96** were completed, many of which related to this year and some set previously.

The Learning Themes Dashboard supports the LIG to determine, what if any impact its action may have had. For example, data can be analysed in relation to prevalence of a particular theme at Rapid Reviews before and after any associated LIG actions are completed. This helps to provide assurance that action has been embedded and is supporting positive change.

Whilst our focus is always Kent children and the difference LIG activity has made to them, agency representatives have also reported benefits of group membership;

**“Because of being part of LIG, I’ve met so many new people and made lots of connections in my own organisation I wouldn’t have otherwise.”**

**“Being a part of LIG has given me a much better understanding of how each part of the practice review process fits together.”**



**Kent Safeguarding Children**  
multi-agency partnership

# Acting on learning

## Children with Asthma and Allergies

In response to learning and recommendations identified in the David LCSPR (reported in the 2023/24 KSCMP Annual Report), local health providers have made reviewed and made changes to the care of children with asthma and allergies. Three of the four relevant health providers are now using the Asthma and Lung UK asthma management template and all four have adopted use of the British Society for Allergy & Clinical Immunology (BSACI) allergy template. Going further than the LCSPR recommendations, colleagues from the Kent and Medway NHS ICB (KMICB) made the Asthma and Lung UK template available electronically on the EMIS system so patients can access their plan at any time.

A link to the Asthma Friendly Schools website was included in the KCC Education Strategy.

## Was Not Brought

In response to learning identified in the Lost in Plain Sight LCSPR (reported in the 2021/22 KSCMP Annual Report), Kent County Council's Integrated Children's Services undertook an audit of Requests for Support (referrals to KCC's Children's Front Door) where there were concerns that a child 'Was Not Brought' to medical appointments. As a result of LIG, those cases reviewed were then identified to KMICB who liaised with the individual health providers to share learning from the audit back to them – effectively creating a feedback loop.

## What has the impact been?

The Department for Education published a revised Early Years Foundation Stage framework which will come into effect from September 2025. The framework includes specific requirements and references to choking prevention and safe eating, informed by the Oliver Steeper LCSPR and [EatSafe campaign](#) (see [2023/24 Annual Report](#)).

Other Partnership areas have sought KSCMP's experience and knowledge, including the resources established to support professionals engaged in practice review processes. One Partnership colleague shared feedback:

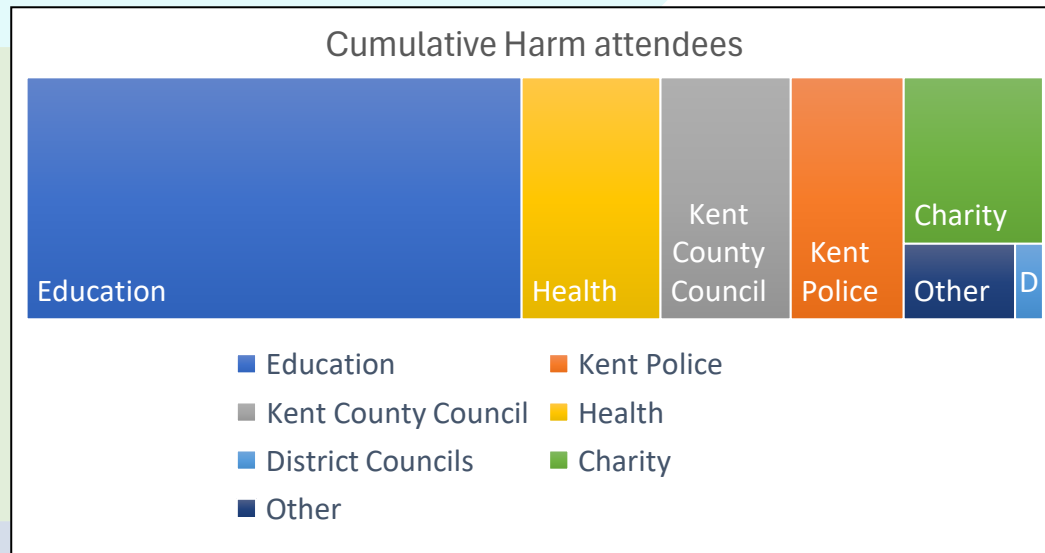
**“...by far, Kent have the best suite of guidance documents and webinars in relation to LCSPRs that I have ever seen. They also hold excellent Author's Briefings so it's really clear what the expectation is of those writing reports.”**





# Cumulative Harm Seminar

On Wednesday 5<sup>th</sup> February 2025 a Cumulative Harm seminar was held, building on learning identified in the Jasper Red LCSPR and other practice reviews. In total 117 multi-agency professionals attended, an overview of attendance by organisation or sector can be seen in the chart to the below.



The seminar was organised as a result of an action set by LIG to disseminate important learning from the Jasper Red LCSPR, but also to capture feedback from a range of multi-agency partners about how cumulative harm is currently understood, recorded and assessed in practice. To achieve this the attendees were split into breakout rooms and given questions to discuss and provide written responses to via an online form. The aim was to gauge current levels of understanding regarding cumulative harm, what resources exist to support practitioners in identifying cumulative harm, and what practitioners would find helpful to support them identifying and responding to cumulative harm. The breakout discussion responses will be considered at a future LIG to inform further actions to ensure cumulative harm is understood, recognised and responded to.

## What has the impact been?

A feedback form was sent to attendees after the event, to which 29 responses have been received. Key indications:

- **100%** of respondents rated the event as a 4 or 5 (on a scale where 1 is low and 5 is high)
- **97%** of respondents indicated they had learned something new to apply to their work

Multiple feedback comments highlighted the benefit of multi-agency events, with one commenting:

**“Always good to work with colleagues from different organisations and learn about their perspectives.”**

During the breakout discussions attendees were asked what they would do differently after attending the seminar, responses included:

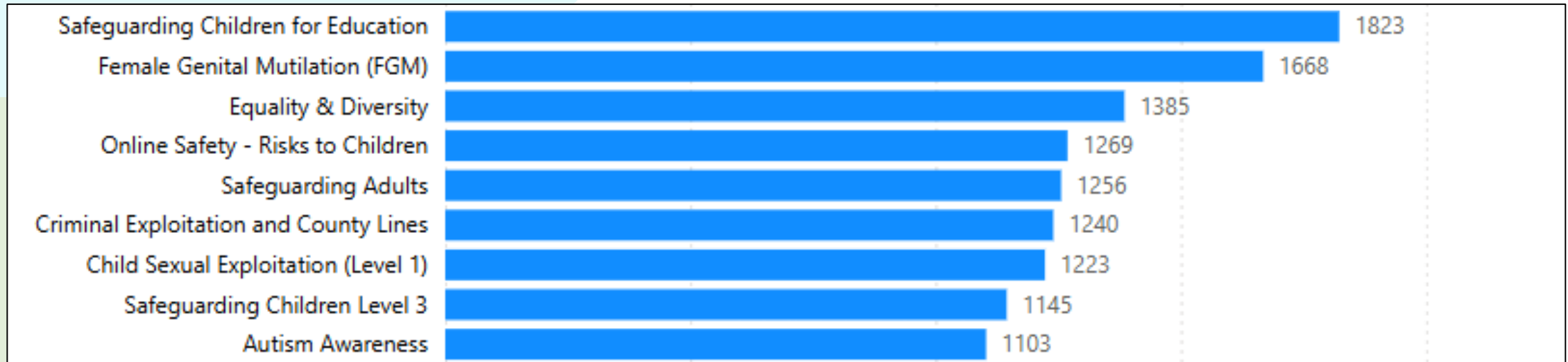
- Adding further information to team safeguarding training
- Consider the whole family and their background history
- Read Practice Reviews
- Communicate and request more information to other professionals
- Better capture the voice of and included fathers
- Include more information within onward referrals and explicitly identify concerns related to cumulative harm
- Review the potential for cumulative harm within existing caseload
- Be more curious about the background and circumstances of children
- Change own thinking about resilience and what that means for children.



**Kent Safeguarding Children**  
multi-agency partnership

# Training – e-learning

In 2024/25, **43,307 e-learning courses** were completed by learners in Kent, a 2.9% increase on the 2023/24. The below chart shows the courses which have had over 1000 completions in this reporting year.



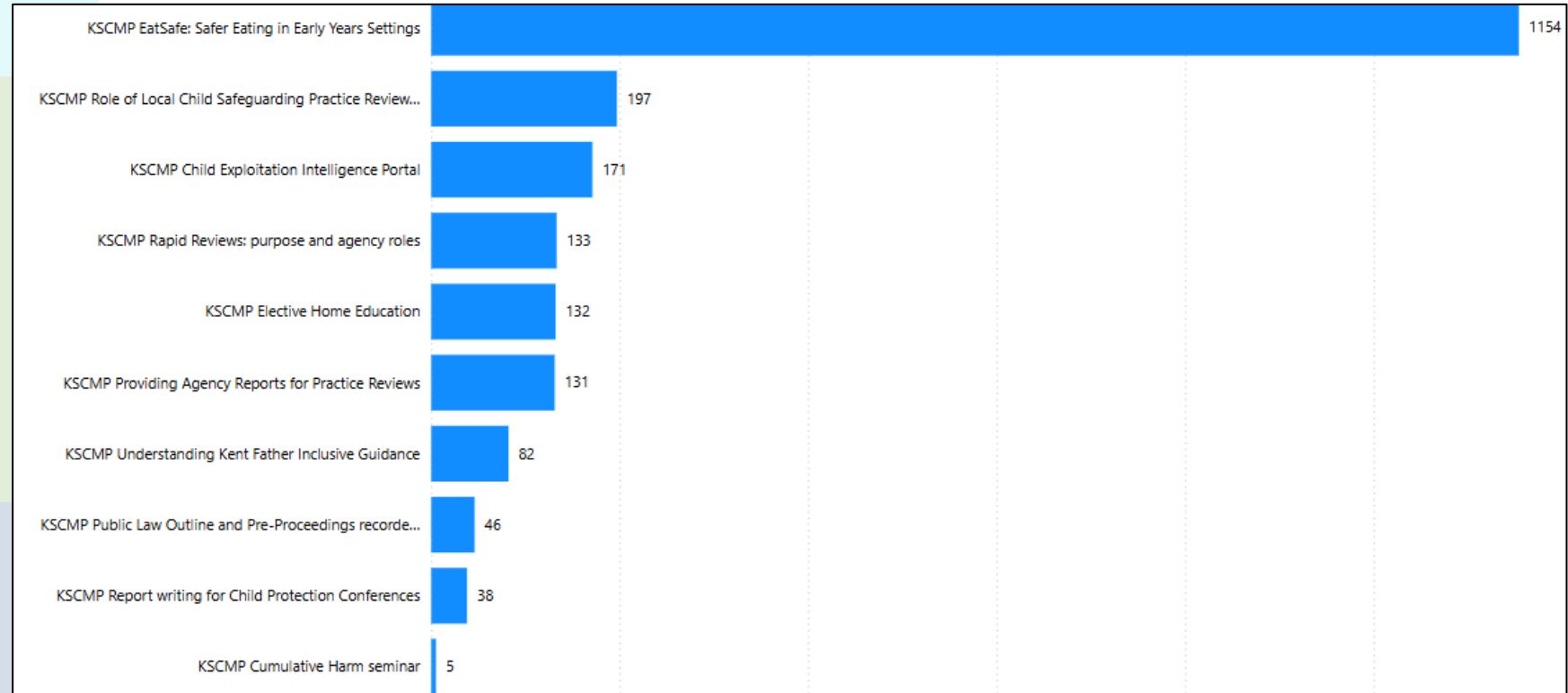
In conjunction with Medway Safeguarding Children Partnership, we reviewed our e-learning course offer in summer 2024, identifying courses which were underused or not specifically relevant to safeguarding children and replaced them with alternative courses aligned with the interests and needs of the Partnerships. As a result, 12 new e-learning courses have been included into the KSCMP training offer: ADHD Awareness, Conflict Management, Cultural Awareness in Safeguarding, Disability Awareness, Dysphagia Awareness, Having Difficult Conversations, Lead Professional, Learning Disabilities Awareness, LGBTQ+ Awareness, Sexual Harassment in Education, Supporting Mental Wellbeing and Emotional Health in Education, and Whistleblowing.

# Training – Recorded webinars

The KSCMP has continued to develop its recorded webinars, both those developed as standalone recorded webinars and recordings of live training events. In 2024/25, a further **3 courses** have been recorded and made available in this way, bringing the total number of courses to **10**. The new courses developed are:

- Elective Home Education
- Report writing for Child Protection conferences
- Cumulative Harm seminar

Recorded courses have been completed **2,089 times** in the year. The chart to the right shows completions by course.



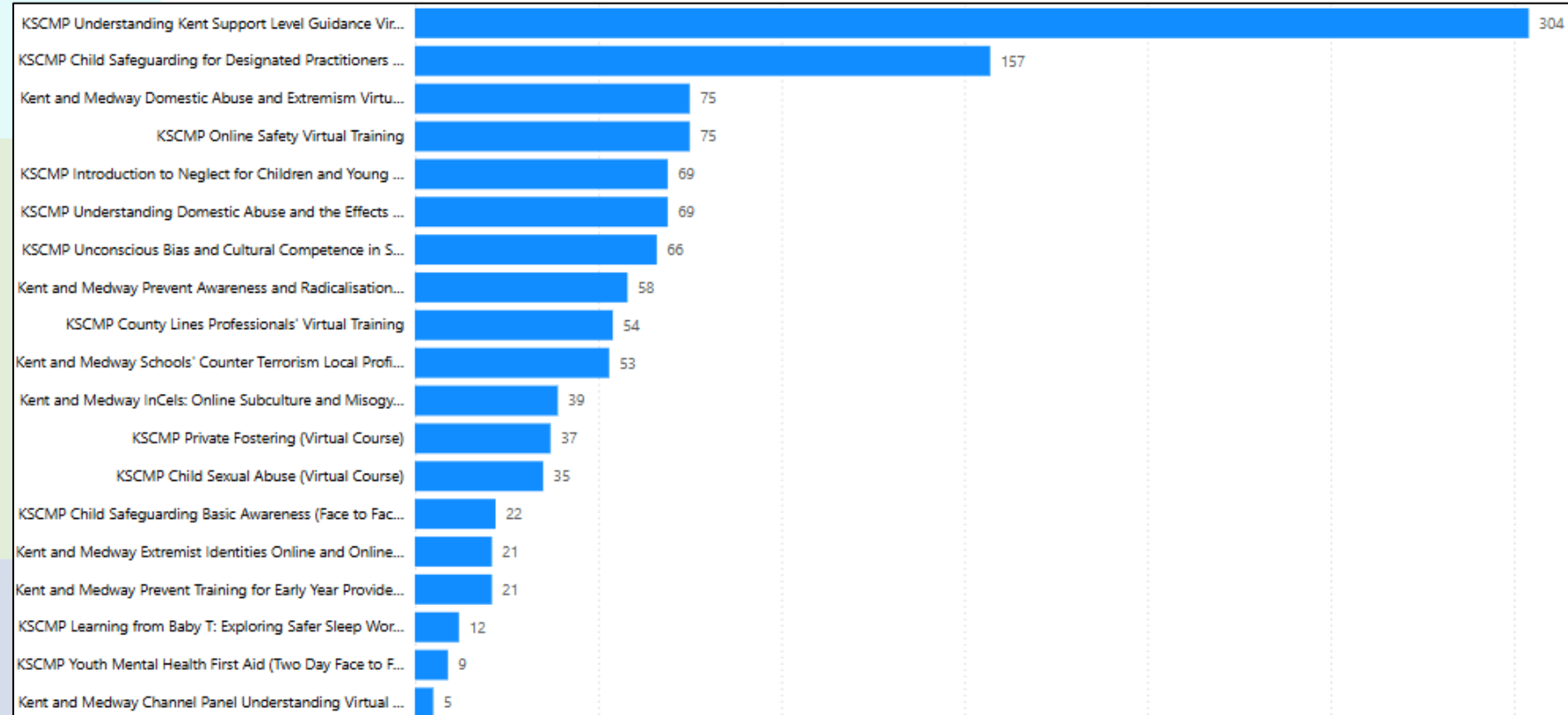
# Training - delivered

Delivered courses continue to form a core part of KSCMP's learning and development programme, with further expansion in 2024/25. New courses made available in this year include:

- Understanding Domestic Abuse and the Effects on children and young people
- County Lines

In this year, KSCMP delivered courses have been attended **1,181 times**.

The chart to the right shows attendance breakdown by course.



# Conclusion

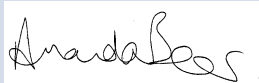
## KSCMP Lead Safeguarding Partners

The revision of the KSCMP arrangements in line with Working Together to Safeguard Children 2023 has clearly defined the role and commitment as Lead Safeguarding Partners. In recognition of the requirements of us in Working Together 2023 we held our first meeting in autumn 2024 at which we provided oversight of the revised Partner arrangements, as well as a number of key Partnership documents including the KSCMP Priorities and Strategic Plan 2024-26, Kent Support Levels Guidance (threshold document), and KSCMP 2023/24 Annual Report. We are pleased to see the progress the KSCMP has made in engaging education and will invite representation in the LSP meetings moving forward, to ensure the voice of education is heard at all strategic levels of the Partnership. We do note that our revised arrangements highlight the need for further consideration to include the voices of children and families within the Partnership and whilst there has been progress through the Child's Voice Project, there remains work to be undertaken in the forthcoming year.

The Section 11 audit undertaken this year provides a benchmark as to how our agencies are delivering their safeguarding children responsibilities. Whilst there is assurance derived from the high percentage of indicators being met, we also recognise areas where there is more to be done.

The significant level of activity to learn and improve from practice reviews is clear in this report, with the Partnership beginning to see the longer term impact of its activities at both a local and national level. In future the KSCMP, through the LIG, will continue to build on capturing impact of its activities. A number of significant pieces of work, such as the cannabis awareness campaign and children as protective factors campaign, will be delivered in 2025/26, alongside the development of new priorities for the Partnership. It will be important for us to consider the impact we expect these to have and how we are able to measure this.

The next year will also see work to transform the way we work a system to safeguard children. It will be vital that we work together to deliver against the vision for one connected system for children and families, especially given other broader reform and change in all of our sectors. We are committed to continuing to fulfilling the LSP responsibilities throughout the upcoming year, particularly as the Partnership navigates the significant landscape of national change and transformation.



**Amanda Beer,**  
Chief Executive,  
Kent County Council



**Paul Bentley,**  
Chief Executive,  
NHS Kent & Medway



**Tim Smith,**  
Chief Constable,  
Kent Police

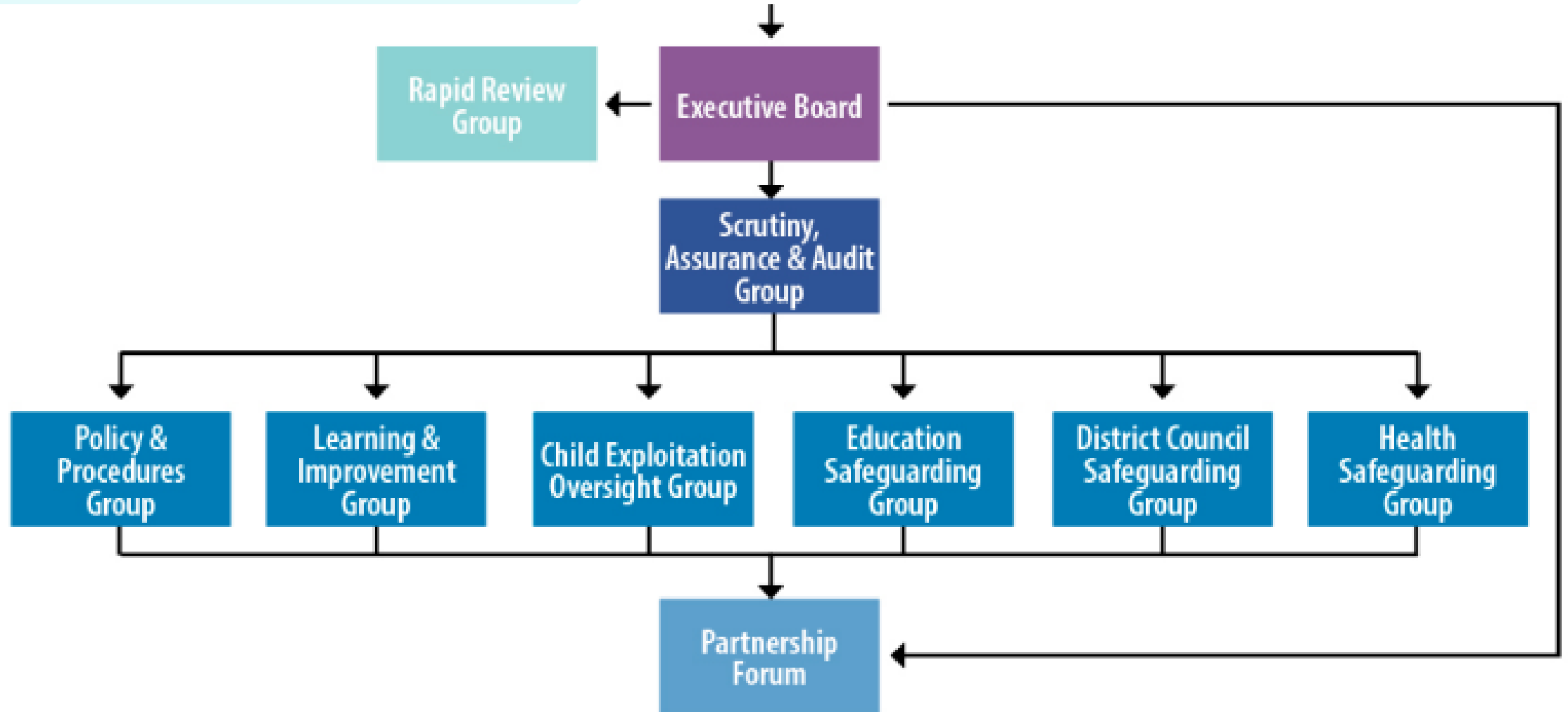


**Kent Safeguarding Children**  
multi-agency partnership

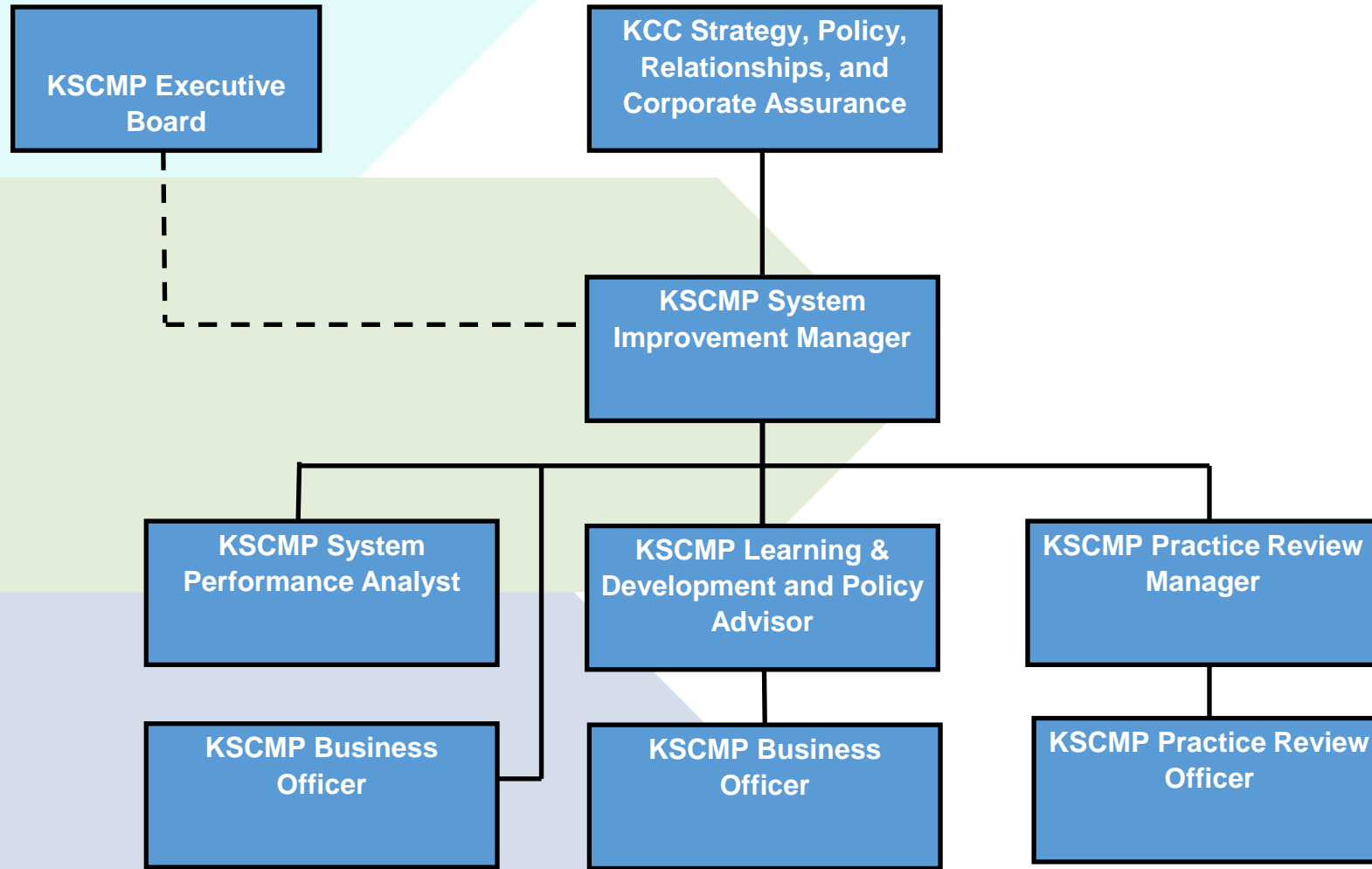
# Appendices



# Appendix One – KSCMP Structure



# Appendix Two – KSCMP Business Team Structure





# Appendix Three – Financial Contributions

Agency	Contributions 2024-25
Kent County Council	£242,334.00
Kent Police and Crime Commissioner for Kent	£45,934.00
Total Health Contributions	£116,374.05
Kent, Surrey and Sussex Probation Service	£2910.40
Kent Fire and Rescue Service	£5000.00
District/Borough Councils (each) x12	£1500.00
Total District/Borough Council Contributions	£18,000.00
<b>TOTAL</b>	<b>£430,552.45</b>



# Appendix Four – Agencies within our partnership

<b>Safeguarding Partners</b>
Kent County Council Kent and Medway NHS Integrated Care Board Kent Police
<b>Education</b>
The Education People 16-19 Academies Alternative provision academies Governing bodies of maintained schools Governing bodies of maintained nursery schools Governing bodies of pupil referral units Independent educational institutions Schools approved under section 342 of the Education Act 1996(e)- SEND Special post-16 institutions Governing bodies of institutions within the further education sector Governing bodies of English higher education providers Childminders
<b>Health provider trusts</b>
Kent Community Health Foundation NHS Trust (KCHFT) Kent and Medway Partnership NHS Trust (KMPT) North East London Foundation NHS Trust (NELFT) East Kent Hospital University Foundation NHS Trust (EKHUFT) Maidstone and Tunbridge Wells NHS Trust (MTW) Dartford and Gravesham NHS Trust South East Coast Ambulance Service (SECAmbs)



**Kent Safeguarding Children**  
multi-agency partnership

# Appendix Four – Agencies within our partnership (cont.)

<b>Additional social care</b>
Registered providers of adoption support services Registered providers of fostering services Registered providers of children's homes Registered providers of residential family centres Registered providers and residential holiday schemes for disabled children
<b>District councils</b>
Ashford Borough Council Canterbury City Council Dartford Borough Council Dover District Council Folkestone and Hythe District Council Gravesham Borough Council Maidstone Borough Council Sevenoaks District Council Swale Borough Council Thanet District Council Tonbridge and Malling Borough Council Tunbridge Wells Borough Council
<b>Other agencies</b>
Kent, Surrey and Sussex Probation Service The Children and Family Court Advisory Support Service (CAFCASS) Kent Fire and Rescue Service British Transport Police Port of Dover Police UK Border Force



# Appendix Five – Kent Safeguarding Context data references

1. 2023 Mid Year Population. Source: ONS, from Kent Analytics (KCC)
2. Children living in **relative** low income families (defined as a family in low income before housing costs in the reference year Source DWP (2022/23), from Kent Analytics (KCC)
3. Source: MIU, KCC Snapshot as at 31/3/2025
4. Number of missing episodes – open to CSW, EH, OLA or not open to CSWS (totalled). Source: MIU, KCC
5. Referrals are for the NELFT single point of access and include referrals to Kent Children and Young People's mental health service and the Neurodevelopmental diagnostic assessment service. (This figure includes Crisis, Neuro and Locality together.) NELFT are one of four providers of ND assessments in Kent, and provide them for 11+ in West and North Kent and 8+ in East Kent. Referral data is across Kent (excludes Medway) in the 12 months up to and including March 2025. Source: NELFT
6. Ethnic minority categories excluded are: White English, White British, Other White British, Scottish, Welsh, Cornish, Not obtained, refused and not stated. Ethnic Minority includes pupils classed as White Other. Source: January 2025 School census from MIU, KCC.
7. Source: January 2025 School Census from MIU, KCC
8. Source: MIU, KCC Snapshot as at 31/3/2025
9. Source: MIU, KCC Snapshot as at 31/3/2025
10. Breakdown of Youth Justice Caseload population (Snapshot). Source: MIU, KCC Snapshot as of Mar 2025
11. Source: MIU, KCC Snapshot as at 31/3/2025
12. Number of young people at high risk of child exploitation (number of YP who have had a risk of CSE identified Apr 24 to Mar 25) split by involvement with EH or CSWS. Source MIU, KCC
13. Number of C&F assessments where one of the factors identified was young carers (Apr 24 – Mar 25) Source: MIU, KCC
14. Source: MIU, KCC Snapshot as at 31/3/2025
15. Number of C&F assessments where domestic abuse was identified as a factor of the assessment, broken down into 3 categories (Domestic Violence – Child, Domestic Violence – Parent, Domestic Violence – Other) (Apr 24 – Mar 25) Source: MIU, KCC
16. Number of Referrals to Family Group Conferencing (now renamed to Social Connections Service, by families and individuals received between Apr 24 and Mar 25. Source: MIU, KCC