

Annual Report

October 2021 –

September 2022

Contents	Page
Foreword	3
Headlines	4
Kent Safeguarding Context in Numbers	5
Kent Safeguarding Children Multi-agency Partnership: Key Projects in 2021-22	6
Scrutiny, Challenge and Assurance	9
KSCMP Priority Areas of Focus	13
Learning and Improvement	14
Appendices	23
Appendix One – KSCMP Structure	23
Appendix Two – KSCMP Business Team Structure	24
Appendix Three – KSCMP Budget	25
Appendix Four – Financial Contributions	26
Appendix Five – Agencies within Partnership	27
Appendix Six – Kent Safeguarding Context data references	29

Foreword

This is the third Kent Safeguarding Children Multi-agency Partnership annual report, reflecting on the period from October 2021 to September 2022. This has been a year

of change, consolidation, and adaptation, with the move from the Clinical Commissioning Group to an Integrated Care Board, transitioning out of the pandemic to living with Covid, as well as significant signalled changes at national level through the Independent Review of Children’s Social Care and the National Child Safeguarding Practice Review Panel’s review of Child Protection in England. During the course of this year the Partnership has also continued to experience change, with three new Executive Board members from those in place at this time last year. It has also been a year in which demand on the public services in Kent has continued to increase, against a backdrop of rising cost of living demands and concerns.

However, there has been significant progress made within the Partnership. In May we published revised KSCMP arrangements which reflect the learning of the Architecture Review undertaken last year and have enabled us to better connect the activities of Partnership. We also produced our first annual plan which was a positive step to ensure a golden thread running through the Partnership, with partners pulling in the same direction and accountable measures to understand progress being made.

Whilst there have been some good news stories, including Kent County Council’s Children’s Social Care being awarded an ‘Outstanding’ Ofsted grading, and positive feedback in response to the Partnership’s adoption of innovative methodology for Local Child Safeguarding Practice Reviews, it has not been without challenge. Over the coming year we will, as an Executive, continue to build on the positive progress made and provide strong leadership to the Partnership to serve our ultimate goal of safeguarding the wellbeing of children in Kent in fulfilment of our statutory duties.



Sarah Hammond

Sarah Hammond,
Corporate Director,
Children, Young People
and Education,
Kent County Council



Harman

Tracey Harman,
Assistant Chief
Constable,
Kent Police



Eileen Sills

Dame Eileen Sills
Chief Nursing Officer,
NHS Kent & Medway

Key headlines: October 2021 to September 2022



Key achievements

- Revised KSCMP arrangements published
- Emerging Themes Group established
- Education Safeguarding Group re-established
- Communications and Engagement Project commenced
- 51 Section 11 self-assessments collected



Practice improvement

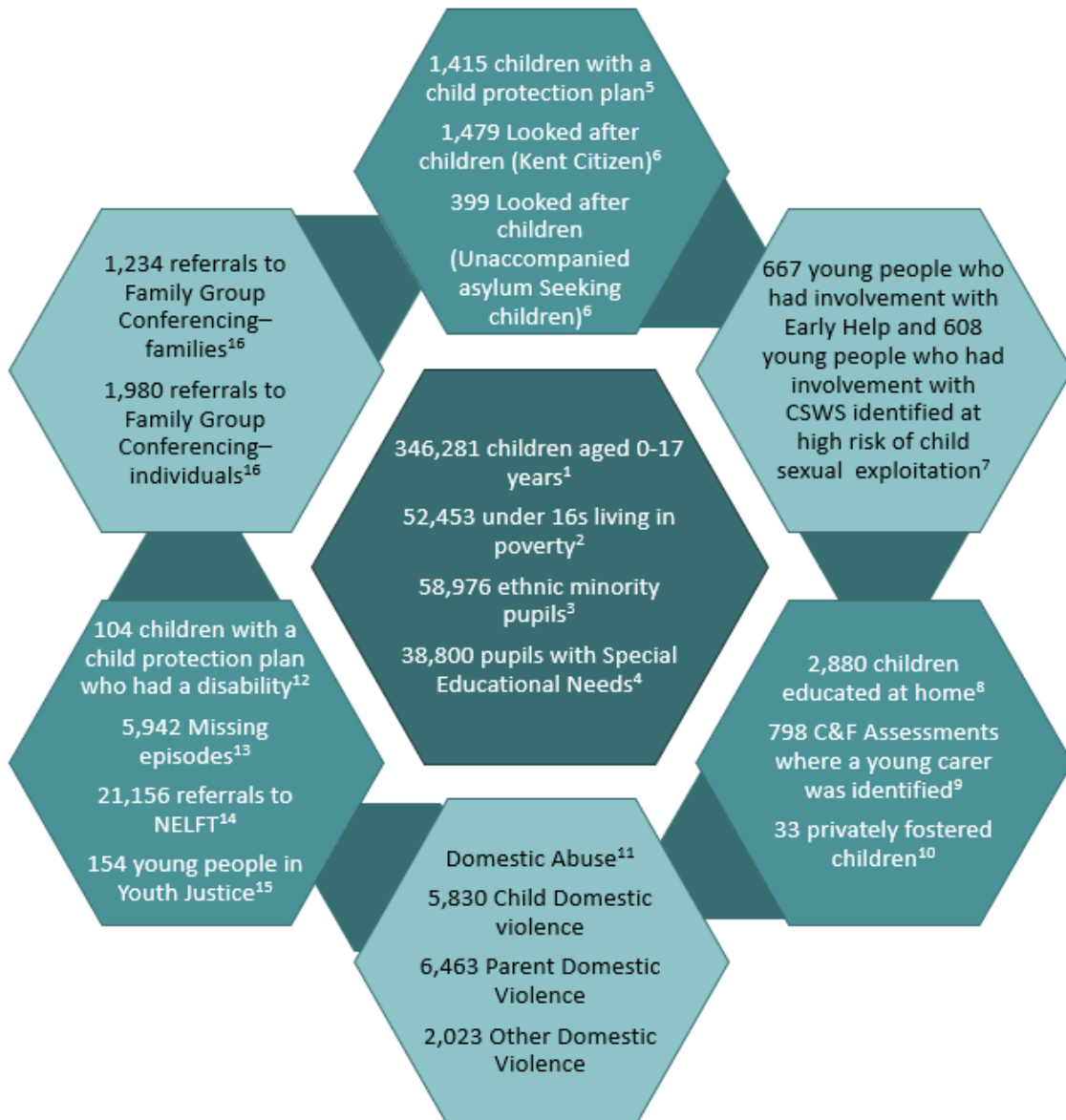
- 3 Serious Case Reviews published
- 2 Local Child Safeguarding Practice Reviews published
- Harm to Under 2's in Kent thematic study
- Fathers and Families Engagement review



Multi-agency training

- 38 multi-agency courses delivered
- Over 640 training attendances
- 36,712 KSCMP e-learning course completed

Kent Safeguarding Context in Numbers (see Appendix 5 for list of references)



Kent Safeguarding Children Multi-agency Partnership: Key Projects in 2020/21

Architecture project

The 2021-22 annual report referenced the Architecture Review which had taken place to assess what was working well and where improvements were needed in the arrangement of the Partnership. The Executive Board reviewed and agreed the recommendations in November 2021, with work since ongoing to enact these. In June 2022 a revised set of KSCMP arrangements were published, which refined those put in place in 2019, and gave more clarity on some structural aspects that had developed since the inception of the Partnership. Two sub-groups named in the arrangements, the Emerging Themes Group and Education Safeguarding Group, had not been operating since late 2019, so work has been undertaken to bring these groups into existence.

A key finding of the review was that a wholesale shift from the Board culture to the Partnership had not yet been achieved, unaided by opaque communication lines and a sense that a golden thread from the Executive and their priorities out to the sub-groups and broader partners was missing. These findings have shaped the plans and projects of the Business Team, including establishing a 2022-23 Partnership plan (discussed in more detail further in this report).

Given the scope of the review was both short and long-term improvement, there are a number of areas that remain in progress or are planned for consideration in future. Development of a Partnership forum, to provide a space for interface between the Executive, the sub-groups and broader partners, was agreed in principle and is currently being explored further within the separate Communications and Engagement Project.

Education project

The KSCMP Education project was referenced in last year's annual report, as it commenced mid-2021 following the Ofsted Review of Sexual Abuse in Schools and Colleges Report¹ and the Wood Review². Both highlighted the need to consider and improve multi-agency engagement with schools and educational establishments to improve the effectiveness in local safeguarding areas. The project considered a range of aspects, and two reports were produced outlining the findings, the work completed, and recommendations. The first was considered by the Executive Board in Autumn 2021 and the latter circulated in Spring 2022.

These reports outlined the research findings of the review that the KSCMP Business Team undertook regarding how the Partnership and key partners work with schools to improve multi-agency safeguarding. The study included an analysis of a range of

¹ <https://www.gov.uk/government/publications/review-of-sexual-abuse-in-schools-and-colleges/review-of-sexual-abuse-in-schools-and-colleges>

² <https://www.gov.uk/government/publications/wood-review-of-multi-agency-safeguarding-arrangements>

quantitative (statistics from consultations, training etc) and qualitative (focus groups with Headteachers, interviews etc) data to inform its study scope and findings.

Analysis carried out in Autumn 2021 and early 2022 showed that there was limited understanding of who KSCMP are and what our purpose is amongst education providers. This included limited awareness of the difference between The Education People, KCC Integrated Children's Services Front Door, and KSCMP.

The survey also showed that there were no clear-cut ways or ideas of how the Partnership should engage with schools and education settings, as respondents to the survey did not all attend the same type of meetings that were offered to them, for example not all Designated Safeguarding Leads (DSLs) are Headteachers so did not attend Headteacher briefing sessions or Kent Association of Headteacher meetings. Other settings expected the Partnership to contact them individually either by face-to-face meetings or by phone.

One of the actions and recommendations that resulted from this work were to produce guidance for schools about who KSCMP are and what they do, including information on the Front Door and The Education People. This was completed early 2022. KSCMP reviewed the way it communicated with education settings and a member of the Business Team now attends and presents at meetings with as many educational settings as possible, these have included DSL meetings and Early Years Network Briefings run by The Education People and meetings with Further and Higher Education staff. KSCMP has also liaised with Kent Association of Headteachers to support sending out communications to schools. KSCMP has also sent out its own newsletters and utilised social media channels to reach more professionals in education.

The KSCMP Education subgroup was also re-established in April 2022. The group has held two meetings so far, with quarterly meetings planned. There is good attendance at this group from all types of settings including Early Years, Primary, Secondary, Grammar, Pupil Referral Units (PRUs), Special, Independent, and Further and Higher Education. This group is starting to allow for two-way dialogue to occur between the Partnership and education.

KSCMP are also involving education in being the multi-agency audit to consider the appropriateness of referrals to the Front Door with a focus on the quality of information provided in the Request for Support (RFS).

KSCMP is committed to further ongoing work to continue to build better relationships with education professionals to safeguard and promote the welfare of all children in Kent.

Communication and Engagement project

The Communication and Engagement project commenced in summer 2022. The project considers the development of mechanisms to improve communications about, and to better convey developments achieved by, the KSCMP. The project is

looking both to develop a clear identity and 'brand' and consider lines of communication across the Partnership.

The project also brings into scope the recommendation of the Architecture Review to establish a Partnership forum to provide a space for the Executive Board to communicate with the broader Partnership. The forum will be reconsidered, and a clearer vision and design formed should it be agreed to continue.

Allergy Awareness week

Over the course of the last 12 months KSCMP has continued to expand its social media presence through the KSCMP Twitter account, with a regular schedule produced to highlight both new content and key messages related to safeguarding children in Kent. Tweets are often focused on national awareness days and week, highlighting relevant local content.

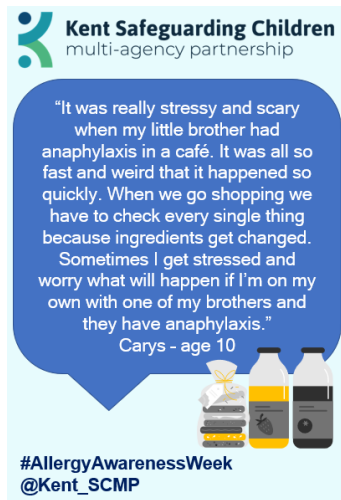
In 2022 the 25th to 29th April was Allergy Awareness Week in the UK. Ahead of the week the KSCMP Business Team reached out to a small number of children in Kent with allergies to produce a series of quotes for use on social media. These received the highest amount of engagement to date on Twitter and attracted support from national allergy organisations and charities. The quotes are included below and were an effective way of sharing the lived experiences of children in Kent.



Kent Safeguarding Children
multi-agency partnership

"Other people think, 'oh, it's just allergies' and don't really understand what I can and can't be around. Sometimes friends avoid me because of it and walk away. It makes me feel alone and angry. Some think if an allergen is 'just an ingredient' it doesn't matter - even teachers, and they're meant to keep me safe. I have to be aware everywhere I go which isn't a nice feeling, because I'm never going to be comfortable."
Frank - age 12

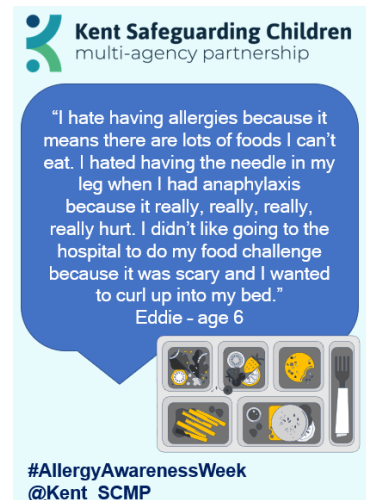
#AllergyAwarenessWeek
@Kent_SCMP



Kent Safeguarding Children
multi-agency partnership

"It was really stressy and scary when my little brother had anaphylaxis in a café. It was all so fast and weird that it happened so quickly. When we go shopping we have to check every single thing because ingredients get changed. Sometimes I get stressed and worry what will happen if I'm on my own with one of my brothers and they have anaphylaxis."
Carys - age 10

#AllergyAwarenessWeek
@Kent_SCMP



Kent Safeguarding Children
multi-agency partnership

"I hate having allergies because it means there are lots of foods I can't eat. I hated having the needle in my leg when I had anaphylaxis because it really, really, really hurt. I didn't like going to the hospital to do my food challenge because it was scary and I wanted to curl up into my bed."
Eddie - age 6

#AllergyAwarenessWeek
@Kent_SCMP

Scrutiny, Challenge and Assurance

Independent Scrutineer Evaluation

Membership of the KSCMP Executive has been delegated to the Director of Children's Services, the Chief Nurse and the Assistant Chief Constable. This is in line with other partnerships nationally. Since the last annual report there has been a turnover of senior staff in all three statutory partners which has hampered progress of the developing Partnership as Executive Board members establish their working relationships. Despite this challenge, the Partnership has implemented the Architecture Review and established a more coherent sub-group structure to manage the Partnership's workplan.

The Partnership has good business support enabling it to continue to develop despite the changes at a senior level. A review has been concluded of Harm to Children Under 2, providing invaluable learning for the local system. One of the challenges for the Partnership is how it oversees progress against the actions it has developed. New arrangements are being put in place through the Learning Improvement Group to ensure that delivery against action plans is monitored and the Partnership can evidence progress against priorities.

The Executive has held several themed meetings enabling the partners to devote more time to considering issues of national and local significance. Themes have included:

- National Review into the murders of Arthur Labinjo-Hughes and Star Hobson and the Independent Review of Children's Social Care
- Review of findings from Joint Targeted Area Inspections
- Development of Risk Register and Mitigation.

The Partnership has improved its response to notifications of serious incidents to the National Child Safeguarding Practice Review Panel. Feedback from the panel last year on the KSCMP's collated reports described them as difficult to follow and repetitive. The partners have taken action to address this deficit and more recent submissions have received positive feedback about their quality. The Partnership has taken an innovative approach to LCSPRs and this good practice has been recognised by the National Panel.

The Partnership is still developing a dataset which will enable agencies to provide more effective scrutiny and challenge. Steady progress is being made in this area and it is hoped that a comprehensive dataset will be finalised in 2023. The Business Team have provided a detailed analysis of serious incident notifications which showed that numbers in Kent are broadly in line with other comparable authorities. Notifications of under 1s in Kent is above the national average and the Partnership is further exploring how practice can be improved in this area.

I attended the following meetings over the past year:

- KSCMP Executive Meetings
- Scrutiny and Challenge Sub-Group Meetings

- Executive Themed Meetings.

In addition, I undertook a project on working with fathers. This followed a number of national and local reviews which highlighted the failure of agencies to assess fathers and the positives and risks they present to children in their early years. Following meetings with senior and frontline staff several recommendations have been made to the Scrutiny and Challenge sub-group on improving practice. I have challenged decision making in relation to how a serious incident was managed by the Partnership and how effectively the multi-agency child protection arrangements are being managed. Partners have been quick to address concerns.

Overall, despite the challenges arising from Covid-19 and the changes in leadership, the KSCMP has continued to make progress against its objectives. It has improved the organisational structure and the response to serious incidents. The Partnership now has a programme of multi-agency auditing and continues to improve the quality of data to enable more effective scrutiny and challenge. While progress has not been as timely as hoped, a settled Partnership Executive should be able to make good progress in the coming year.

Scrutiny and Challenge

The Scrutiny and Challenge Group has continued to operate, increasing its frequency from a 6-monthly to quarterly meeting schedule following findings of the Architecture Review. As with several Partnership sub-groups a forward plan has been developed, to provide structure and direction and ensure that the group's agendas are reflective of the direction of the Partnership. During this year the group has scrutinised a range of items, including the Partnership Plan, multi-agency audit plan, Non-Accidental Injury deep dive, Harm to Under 2s study, and Practice Review Project, often building on the comments and recommendations endorsed by the Executive Board.

The Independent Scrutineer presented his analysis of learning from 9 Partnership Rapid Reviews attended between October 2019 and July 2021. The key themes included that rapid review reports contain a wealth of information that the Partnership may not be taking advantage of, which was subsequently considered within the implementation of the Practice Review Project. Additionally, it was highlighted that there was an over-reliance on the mother for essential information, a finding which contributed to the development of the terms of reference of the fathers and families engagement review (see the Learning and Improvement section). The Scrutineer also challenged as to whether more could be done to ensure better information sharing between GP practices, acute trusts, midwifery, and health visiting, which health colleagues have taken on board to consider.

The group also received an update on the Escalation project previously undertaken by the Business Team, and the actions which had been agreed as a result. In order to understand the efficacy and impact of those actions, the group has agreed for a repeat of the previous survey to be undertaken, and a further consideration of those results.

As reported in last years' report, this group has a longstanding requirement to consider a multi-agency dataset which considers a range of indicators that can provide an overview of how safeguarding systems are operating, highlighting potential areas of concern for exploration, and allowing for the measurement of impact on practice. Despite significant efforts of the KSCMP System Performance Analyst there continues to be ongoing challenges in obtaining the correct data from individual partners.

During this year separate papers related to multi-agency data have been taken to both the Executive Board and the Scrutiny and Challenge Group. Despite senior officers from each of the Safeguarding Partner agencies agreeing to the sharing of relevant data, the indicated data required to fulfil the dataset needs have not necessarily been available. Challenges have included liaison with numerous representatives of each organisation, time-lag in data sets and a lack of clarity regarding what type or level of data can be shared with the Partnership. Scrutiny and Challenge have considered this issue on multiple occasions, leading to a data summit being held in May 2022, followed by single agency meetings. The Business Team have also undertaken work to provide clear guidance regarding information sharing for the purposes of the Partnership³, in response to the uncertainty expressed by some individual partner colleagues. The development of a dataset which provides the Partnership a view of frontline practice to understand its impact on the wellbeing and safeguarding of children in Kent continues to be a priority.

Section 11 Assessments

Section 11 (S11) of the Children Act 2004 places a statutory responsibility on key agencies and organisations to make arrangements to ensure that in discharging their functions they have due regard to the need to safeguard and promote the welfare of children. Agencies are required to complete a full S11 self-assessment on a biennial basis.

The KSCMP are currently undertaking the biennial S11 audit process. As a result of the success of the previous collaboration between Kent and Medway Safeguarding Children Partnerships on the audit, this has again been a combined audit meaning organisations that span both Kent and Medway are only asked to complete one return, covering their duties in one or both local authority areas. The Partnerships have worked together to produce an updated tool based on the previous audit for agencies to complete.

The audit process began in June 2022 with a virtual launch that was well attended. Organisations were given three months to complete and submit their self-assessments, with audits being received in September. Three anonymous staff surveys have also been completed to link with the S11 self-audits, which captures responses from frontline staff, managers, and the wider workforce. These surveys

³ <https://www.kscmp.org.uk/about-kscmp/information-sharing>

explored safeguarding training, how concerns are raised and general knowledge and awareness of safeguarding in their own organisations.

Panel feedback meetings are scheduled for October and November to allow discussion on the S11 audit from a range of multi-agency panel members. The panel will provide feedback on audits, including a level of challenge, but will also seek to identify good practice. Additionally, panels will consider the staff survey results to agree areas to focus on and improve.

Following the panel meetings, organisations will be given the opportunity to revise audits and resubmit based on discussions and feedback. Analysis of audits will take place in late 2022 with dissemination of the analysis report anticipated to the Executive Board in early 2023, before wider circulation.

Multi-agency Audit Programme

The KSCMP are currently working to a multi-agency audit plan which was approved by the Scrutiny and Challenge subgroup and the Executive Board in April 2022. The planned audits were generated from a range of sources, including practice reviews of serious child safeguarding cases and national findings and learning. The KSCMP audit programme consists of a range of different types of audits and activity including 'traditional' multi agency audits, with task groups set up from a wide variety of partners; other multi-agency auditing including looking at practice, case studies and benchmarking to national reports and findings and other Partnerships; Section 11 audits involving self-assessment and follow up scrutiny, as well as desk top reviews. The audit programme contains details of 6 audits which will run to mid-2023.

Despite some delays and challenges, the KSCMP Business Team are currently working on several multi-agency audits. One of the multi-agency audits being undertaken is to consider the appropriateness of what is referred to the Front Door with a focus on the quality of information provided in the Request for Support (RFS). It is hoped that the learning from this audit will be available late 2022 / early 2023.

Priority areas of focus

In late 2021 the Executive agreed that revised priorities for the Partnership were required for 2022-23, alongside a Partnership Plan which has clear actions and measures. Several suggested priority areas of focus were proposed by the Executive, which sub-group Chairs were consulted on prior to the agreement of the final priorities and plan.

2022-2023 priority areas of focus	
Priority focus 1:	Reduce the number of children under 2-years-old who die or are seriously harmed because of abuse and neglect.
Priority focus 2:	Reduce the number of children seriously injured as a result of serious youth violence and ensure an appropriate number of practice review notifications relating to serious youth violence are made to KSCMP to facilitate learning.
Priority focus 3:	Reduce the number of adolescents with complex needs being accommodated in inappropriate placements or settings.
Priority focus 4:	Increase professional confidence and competency in recognising and responding to sexually inappropriate and harmful behaviour in children. Increase children and young people's sense of safety and confidence that concerns or incidents will be appropriately responded to.
Priority focus 5:	Ensure systematic and thematic learning identified through practice reviews is embedded and leads to evidenced improvements in practice.

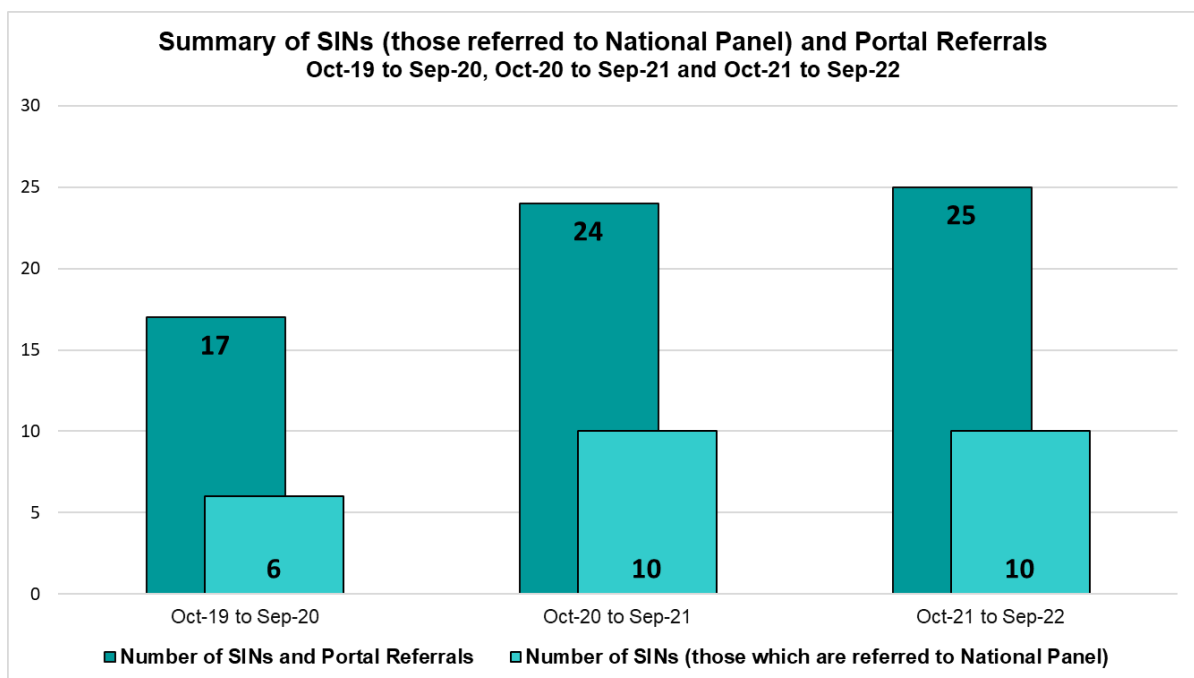
The Partnership Plan recognises however, that safeguarding is an often rapidly changing landscape, and therefore the plan was not intended to be immovable. There is flexibility to amend and expand the measures or actions as required throughout the year, where evidence indicates this is needed.

The plan is monitored by the Scrutiny and Challenge Group, who ensure accountability for actions and quality assure the assessments of progress based on the evidence provided.

Learning and Improvement

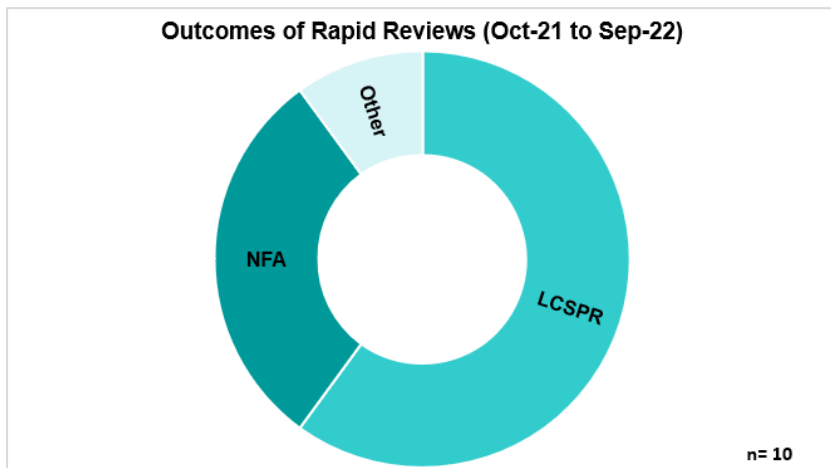
Serious Incident Notifications

KSCMP has continued to track Serious Incident Notifications (SINs) and portal referrals during this year. SINs relate to serious child safeguarding cases the Local Authority refers to the National Panel that have a subsequent rapid review. KSCMP also receive portal referrals from a range of partner agencies. The summary chart below illustrates the numbers received. It should be noted that a SIN or portal referral may be for more than one child but will be counted as only one notification/referral.

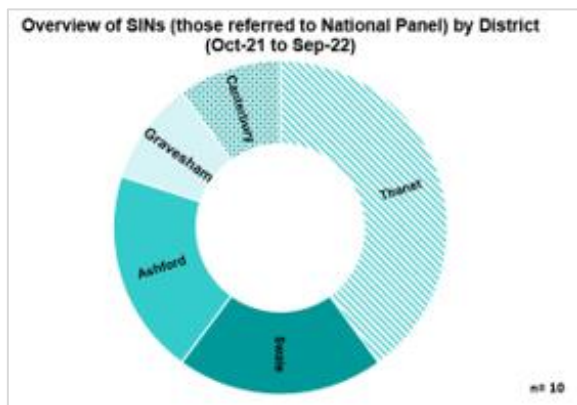
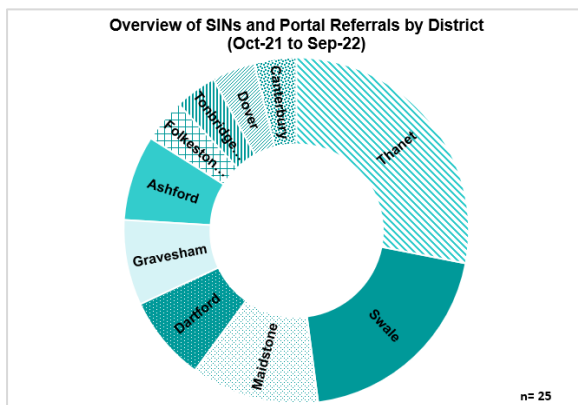


The chart illustrates that between October 2020 and September 2021 the KSCMP received a combined total of 24 SINs and portal referrals, with 10 of those being SINs that triggered a rapid review. This was an increase on the previous year. Between October 2021 and September 2022, the KSCMP received a combined total of 25 SINs and portal referrals, with 10 of those being SINs that triggered a rapid review. This shows a similar picture in the two most recent years.

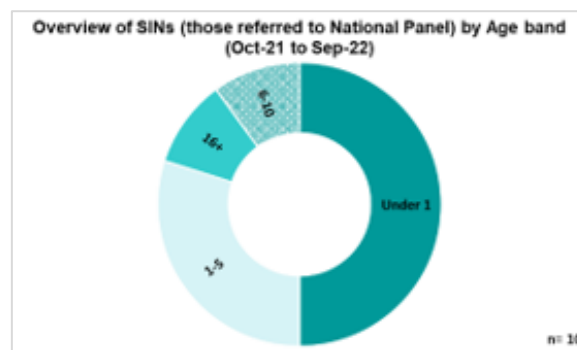
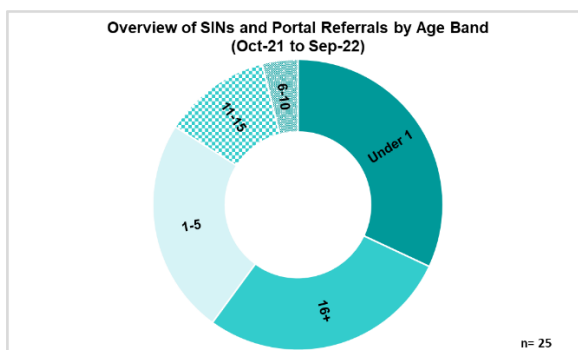
The chart below shows the outcomes of cases from rapid reviews.



The below charts show the geographic distribution of SINs and the overview of SINs and portal referrals in total.



The below further show the split of SINs and portal referrals by age band of the child involved. Where a SIN or portal referral had more than one child identified, the youngest age child has been represented in these charts.



Local Child Safeguarding Practice Reviews (LCSPRs)

Serious Case Reviews

KSCMP has inherited a number of legacy Serious Case Reviews (SCR) from the previous Kent Safeguarding Children Board (KSCB) which have continued to be progressed. In this year the KSCMP has published three SCRs.

Child M – KSCB agreed to undertake an SCR in relation to Child M in October 2018. Child M died at the age of 6 weeks as a result of serious non-accidental injuries. The review highlighted learning for professionals:

- To be aware of the ‘Kent and Medway Protocol for the Management of Actual or Suspected Bruising in Infants and Children who are not Independently Mobile’
- To understand the Support Levels Guidance and arrangements to undertake district conversations with Children’s Social Care
- To understand the role of the Personal Advisor for Care Leavers and support available to Care Leavers
- To be aware of key messages regarding the impact of crying babies.

Children O&P – KSCB agreed to undertake an SCR into Children O&P in January 2019. Children O&P died at 23-months of age; their mother pleaded guilty to two counts of ‘manslaughter by reason of diminished responsibility’. Key learning for professionals was highlighted regarding:

- Sharing of information between agencies
- Whole family working and risks to children when parents have mental health problems
- Increased reliance on assessments undertaken by phone
- Factors to consider when assessing suicidal ideation and risk.

Anonymous – a third SCR was published anonymously via the NSPCC⁴.

LCSPRs

During this year KSCMP has published two LCSPRs.

Jesse – Jesse had expressed they were transgender and had Autism. The notification was received after an incident when Jesse attempted to end their life. The review identified good practice regarding multi-agency working, support for Autism and emotional health, offering of additional appointments to discuss issues that had led to non-attendance in other services, and practitioners taking time to listen to Jesse. The review also identified learning points regarding:

- Autism diagnosis and support
- Gender dysphoria understanding and support
- Multi-agency working and communication.

⁴ <https://learning.nspcc.org.uk/case-reviews>

Lost in Plain Sight – Concerning a pre-school aged child who died and whose Mother’s partner was subsequently convicted of manslaughter. This LCSPR made use of the flexibilities afforded by Working Together 2018 to undertake a reflective review, to measure the impact of learning and action plan activities since the date of the original incident. The methodology and approach taken was praised by the National Child Safeguarding Practice Review Panel.

Activities of the impact review suggested that faced with a similar set of circumstances, professionals from across the multi-agency network would likely take the necessary steps to effectively safeguard a child in a similar position in the present day. The review also identified further learning points:

- Understanding the lived experience and voice of children, particularly when the child is non-verbal.
- Understanding when a child with a disability is presenting with injuries reported to be self-inflicted, whether it is likely they are being caused in the manner reported, and if so, whether risk of harm through self-injurious behaviour is being adequately responded to.
- The need to for professionals to ask clarifying questions and corroborate explanations for a child’s injuries.

All of the reviews and learning briefings mentioned here (except the anonymous publication) can be found on the KSCMP website⁵.

Learning and Improvement Group

KSCMP is clear, as reflected in the 2021-22 priorities, that learning from practice reviews is a core value of the Partnership. Over the course of 2022 work has taken place to transform the pre-existing Practice Review Group into a Learning and Improvement Group (LIG). The scope of LIG is to ensure the implementation of learning and recommendations from practice reviews, and to consider the impact of activity and changes. From the outset the group has taken time to consider an appropriate method of prioritising reviews for discussion. To support the work of the group a new recommendations tracker and power BI shared workspace has been established to evidence accountability for actions and measure impact from reviews.

Practice Themes

Non-accidental injury in babies under one

In the 2020-21 annual report it was noted that a deep dive study had been undertaken of Non-Accidental Injury (NAI) cases in Kent. The agreed recommendations from the deep dive have been implemented over the last 12 months, including a further thematic study into Harm to Under 2s in Kent (see

⁵ <https://www.kscmp.org.uk/procedures/child-safeguarding-practice-reviews/published-local-child-safeguarding-reviews>

below), a review by the Independent Scrutineer into engagement with Fathers and Families (also below), publication of an NAI factsheet⁶, publication of a pre-birth safeguarding factsheet⁷, and supporting the roll-out of the ICON project in Kent⁸.

Harm to Under 2s in Kent thematic study

This study built on the previous NAI deep dive, with a broader scope to consider significant harm of all under 2s notified to KSCMP in a 3-year-period. Through case analysis, identifying positive practice in similar cases, and engaging directly with professionals, the aim was to identify key themes that help us understand when and why harm occurs and what practice can safeguard young children from harm. The study took place between January and May 2022, with the final report considered by the KSCMP Executive in June 2022 and subsequently published on our website⁹. The recommendations of the review have been considered by the newly established LIG and activity is underway to implement them. Following the publication, the KSCMP has received significant positive feedback and liaison from other Safeguarding Children Partnerships interested in undertaking a similar study in their area. The positive practice element of the review has also been created as a standalone report for broad dissemination and is being built upon by an independent reviewer for two newly commissioned LCSPRs.

Fathers and Families Engagement review

A recommendation in the KSCMP Non-Accidental Injury deep dive highlighted that fathers are not routinely engaged with services and are notably absent within records of visits and assessments. This is an issue which has been noted in numerous national reports and continues to be a practice concern. Similarly, it was found that in numerous cases grandparents or other extended family were referenced as providing additional support, including advice, childcare and even accommodation, but there was limited exploration of who these significant adults are and what role they are playing in the child's life.

As a result of the findings, the NAI report recommended that the KSCMP's Independent Scrutineer undertake a multi-agency review to understand what organisational and procedural requirements and expectations there are of frontline practitioners to incorporate engagement and understanding of fathers and broader family members, when undertaking their routine engagement and assessments in both pre and post birth work. The review is also seeking to ascertain whether the continued issues highlighted regarding engagement of fathers and families is because of strategic policy, or practice level issues. Additionally, the review will consider the questions identified in the National Child Safeguarding Practice Review

⁶ <https://sway.office.com/WBicbpzx7aZEJrb?ref=Link>

⁷ <https://sway.office.com/OAuFUN5kEGBiEbHo?ref=Link>

⁸ <https://www.kentandmedwayccg.nhs.uk/news-and-events/news/icon-launch-coping-babys-crying-help-prevent-traumatic-head-injuries>

⁹ https://www.kscmp.org.uk/__data/assets/pdf_file/0003/137577/KSCMP-Harm-to-Under-2s-final.pdf

Panel's review of NAI in children under 1 caused by male carers, 'The Myth of Invisible Men'¹⁰.

As of the end of September 2022 the review is in the latter stages of completion, with an initial presentation of findings scheduled for the October 2022 Scrutiny and Challenge Group.

Practice Review Project

The Practice Review Project commenced in August 2021 to better understand how practice reviews were being undertaken in Kent and to identify ways to refine and improve processes, as a result leading to better outcomes in practice improvement. The associated reports were delivered in two stages. The first focussed on issues for consideration that needed addressing most urgently to ensure the Partnership was functioning effectively and in compliance with legislation and noted considerations for Part 2. It highlighted:

- The decision and responsibility to notify the Panel of a serious incident
- The difference between LCSPRs and 'Lessons Learned Reviews'
- Dissemination of learning and measuring impact.

The Part 1 report was scrutinised at an Executive Board away day in November 2021 and all recommendations were endorsed. The Part 2 report was scrutinised by the Executive Board in April 2022 and additional recommendations endorsed. It provided an update and further analysis of issues highlighted in Part 1, alongside others that required consideration less urgently, but for practice review processes to be operating most effectively.

The KSCMP Business Team began work to implement the agreed recommendations in Spring and Summer 2022, however in July, following changes to the Executive Board membership further progress was paused, pending the Executive Board convening to discuss how they wish the Business Team to proceed. An extraordinary Executive Board will take place in October 2022 on this matter.

Training

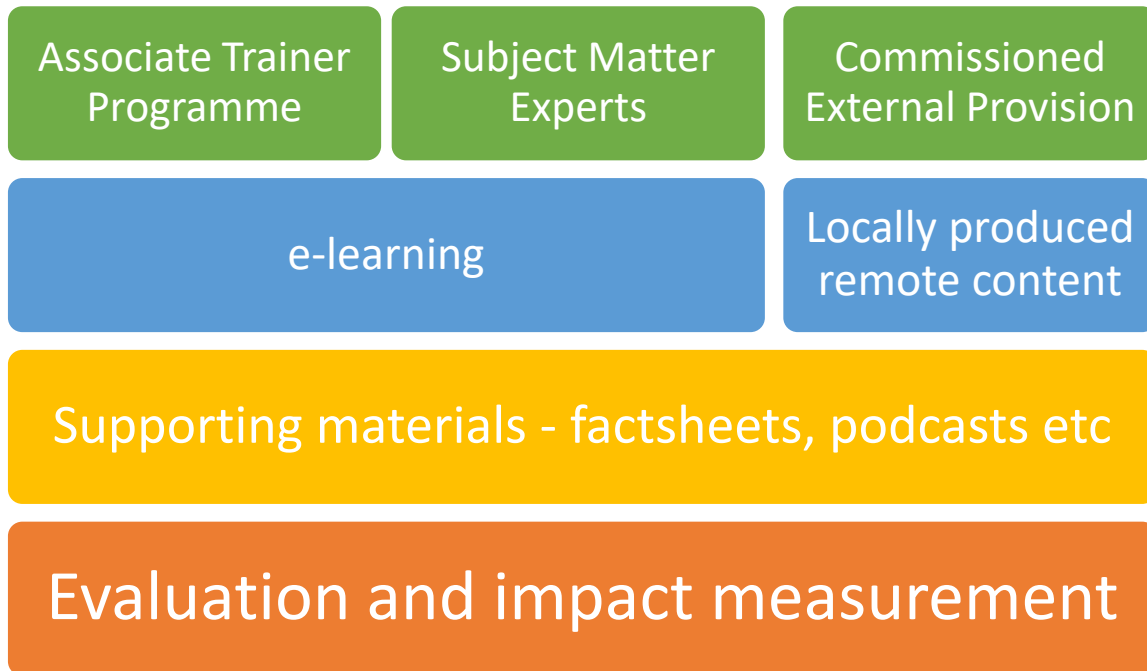
Learning and Development Review

The KSCMP multi-agency training programme was mostly suspended in March 2020 due to ongoing changes in the KSCMP Business Team and the Covid-19 pandemic. A significant review has been undertaken with a view to re-establishing a comprehensive multi-agency training offer which adds value to single agency training and is responsive to emerging themes and learning identified by the Partnership,

¹⁰

https://assets.publishing.service.gov.uk/government/uploads/system/uploads/attachment_data/file/1017944/The_myth_of_invisible_men_safeguarding_children_under_1_from_non-accidental_injury_caused_by_male_carers.pdf

including through practice reviews. In April 2022 the KSCMP Executive Board agreed the future delivery model and programme.



The KSCMP Associate Trainer programme enables multi-agency professionals to undertake train-the-trainer sessions to deliver KSCMP developed courses. Associate Trainers are required to commit to delivery of two courses on behalf of KSCMP to multi-agency audiences per year, as well as being able to deliver courses internally to their organisation. The programme had existed prior to the review and has been re-established with clear boundaries and conditions. During summer 2022 professionals who had previously been engaged in the programme were offered the opportunity to join the new scheme, with 18 Associate Trainers attending a refresher day in June 2022. In August the scheme was opened to new applications to join with 7 successful applicants attending the Associate Trainer introductory training in September 2022, with further applicants scheduled to attend in October. Over the next 12 months a supporting programme is planned for Associate Trainers encompassing train-the-trainer sessions for revised courses, development days, and appropriate continued professional development sessions, alongside regular trainer bulletins and other communications.

The range of courses delivered by Associate Trainers will also continue to expand. Priority has been given to the Child Safeguarding Basic Awareness and Child Safeguarding for Designated Professionals courses initially, owing both to the core nature of the learning but also the results of the training needs analysis undertaken as part of the review. The Child Sexual Abuse course will be delivered in Autumn 2022, and a development programme is planned to review and introduce the remaining courses.

E-learning

In July 2022 the KSCMP moved to a new, more user friendly and intuitive e-learning platform, which also had the capacity for booking and management of delivered

courses and events. For users this did mean creating new accounts on the new platform, however also represented a simplification with e-learning and delivered courses available in one system, rather than separate spaces as they had been previously. There continues to be a range of e-learning training topics available at no cost.

In the period 1st October 2021 to 30th September 2022, 36,712 KSCMP e-learning courses were completed - an 11% reduction on the number of course completions in the previous 12 months. Below are the top ten courses, in order, by number of completions compared with the previous year.

October 2020 – September 2021		October 2021 – September 2022	
Rank	Course	Rank	Course
1.	Safeguarding children level 1	1.	Safeguarding children level 1
2.	Safeguarding against radicalisation	2.	Safeguarding against radicalisation
3.	Safeguarding children for education	3.	Safeguarding children for education
4.	Safeguarding children level 2	4.	Safeguarding children level 2
5.	GDPR	5.	Autism awareness
6.	Safeguarding adults	6.	Criminal exploitation & county lines
7.	Female genital mutilation	7.	Female genital mutilation
8.	Child sexual exploitation level 1	8.	GDPR
9.	Equality and diversity	9.	Safeguarding adults level 2
10.	Online safety: risks to children	10.	Child sexual exploitation level 1

Delivery of training

Focused efforts have been made to begin restabilising a more comprehensive offer of delivered courses throughout the past 12 months. Whilst most of the core programme will be delivered in the upcoming year, a number of specialist and subject matter expert led courses have been delivered.

Course name	No. courses delivered	No. attendees
Contextual Safeguarding	8	139*
Understanding Kent Support Levels Guidance	10	124*
Private Fostering	2	24
MAPPA	2	18*
Allegation Management: The Role of the LADO	3	76
Prevent and Radicalisation Awareness	1	20
Extreme Identities Online	1	16
Extreme Use of Online Gaming	1	7
Core Skills	1	16
Youth Mental Health First Aid	9	63*
Total	38	503

* Completed attendance registers have not been received for all courses, and those indicated have at least one register missing, meaning actual attendance figures are higher than reported.

Events

In March 2022 the KSCMP Business Team ran a seminar entitled 'Curious Mindset: Recognising and Understanding Child Abuse'. The event featured a keynote address from Dr Lydia Taiwo, a child abuse survivor, as well as inputs on local experiences and learning from practice reviews. The seminar was attended by 118 professionals and feedback was overwhelmingly positive.

Learning resources

A key feature of the Learning and Development Review was to continue expanding the resources available to support practitioners, beyond periodical training opportunities. During this year the range of factsheets¹¹ available on the KSCMP website have been expanded, as well as having been redesigned to a more accessible format. Professionals have continued to indicate the usefulness of these as a resource, including schools who have reported printing them to post in staff rooms. Of particular note KSCMP worked with Active Kent and Medway to produce a factsheet on the role of sport and physical activity in keeping young people safe¹² which provides information on safeguarding children within youth sports.

The range of available learning resources has also been further expanded with the introduction of a series of video explainers¹³, which are short videos that provide insight into key policies, procedures and safeguarding topics. The first two explore the Kent Escalation and Professional Challenge Policy and LCSPRs respectively, in response to identified local need. Development of the video explainers will continue over the coming months.

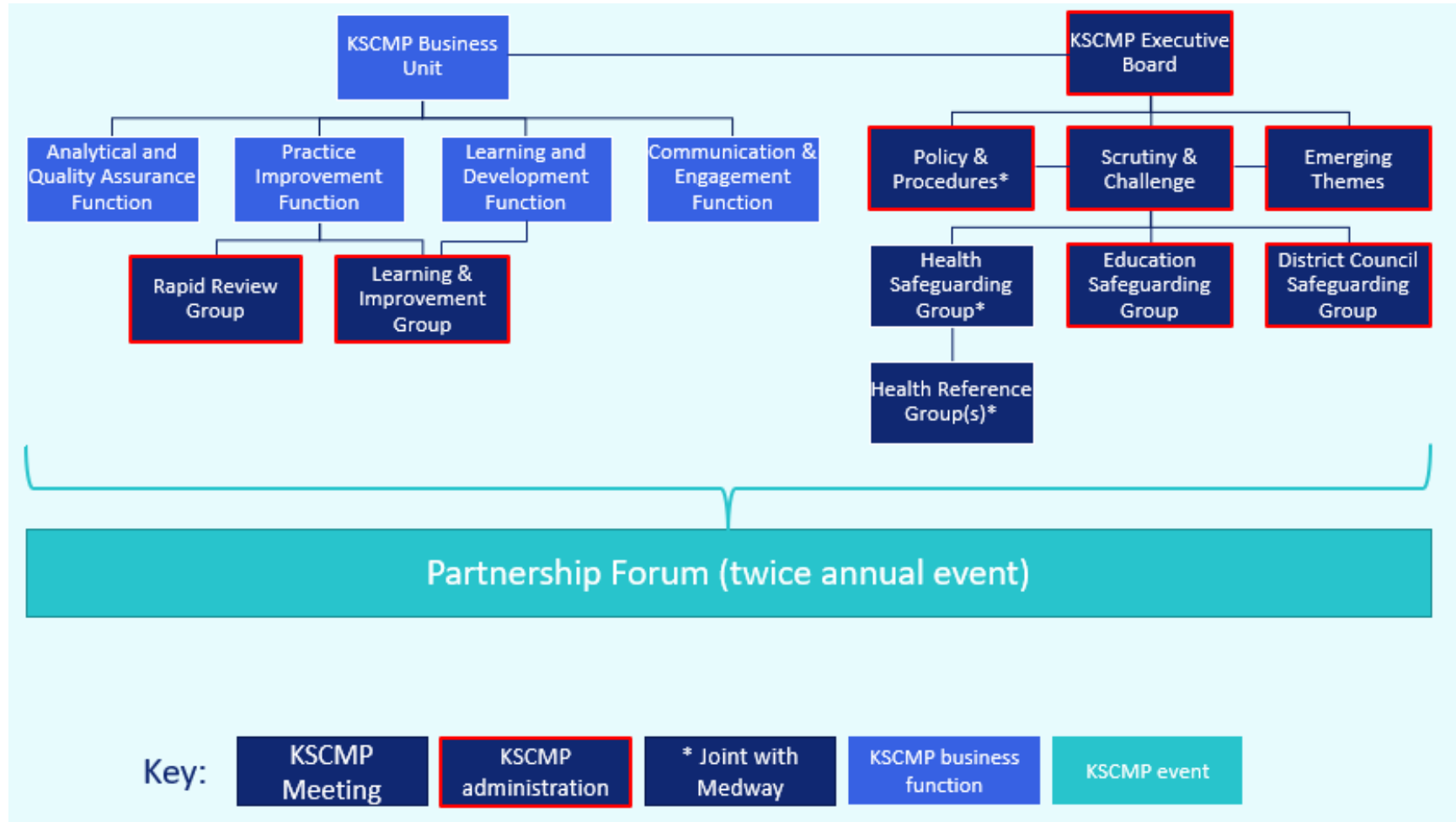
¹¹ <https://www.kscmp.org.uk/training/factsheets>

¹² <https://sway.office.com/H70CM00N8JuyAXOa?ref=Link>

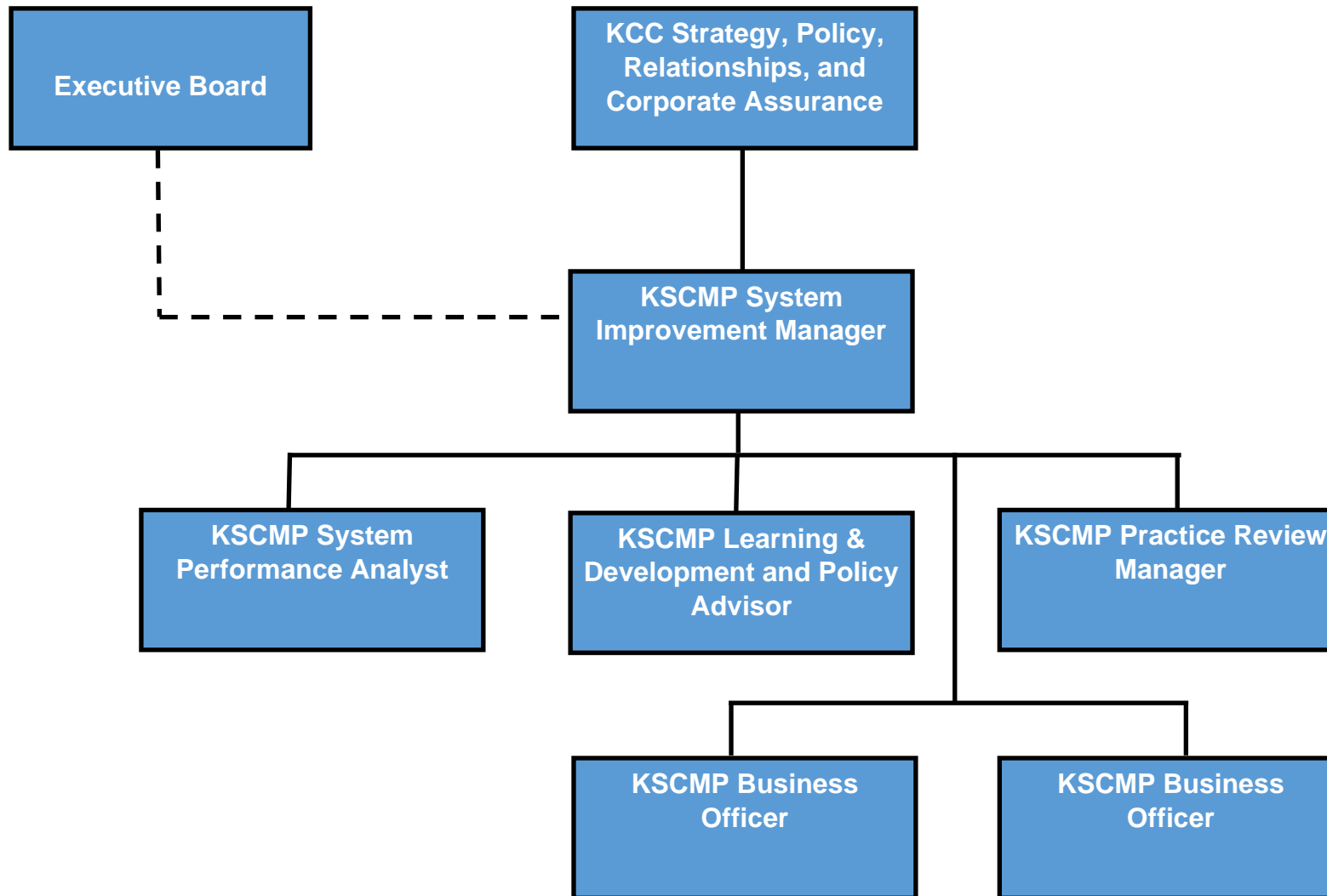
¹³ <https://www.kscmp.org.uk/training/video-explainers>

Appendices

Appendix One – KSCMP Structure



Appendix Two – KSCMP Business Team Structure



Appendix Three – KSCMP Budget

INCOME		EXPENDITURE	
	2021-22 total contributions		2021/22
Balance b/f from 19/20	£16,988.46	KSCMP*	£318,169.86
KCC contributions	£242,334	Training**	£40,519.97
External contributions	£188,218.45	Practice Reviews	£24,387.50
Training income	£29,744.52	Independent Scrutineer	£15,442.38
Total	£477,285.43	Total	£398,519.71
2021/22 roll forward:		£36,115.74	

* Includes staffing and all associated costs

** Training breakdown includes subscriptions to the e-learning provider (£19,451) and for the online training booking system (£5,000).

Appendix Four – Financial Contributions

Agency	Contributions 2021/22
Kent County Council	£242,334.00
Kent Police and Crime Commissioner for Kent	£45,934.00
Kent CCG (each) x 7	£62,662.95
Health Providers (each) x 6	£8,951.85
Total Health Contributions	£116,374.05
National Probation Service/ Kent, Surrey, and Sussex Community Rehabilitation Company	£2910.40
Kent Fire and Rescue Service	£5000
District/Borough Councils (each) x 12	£1500.00
Total District/Borough Council Contributions	£18,000.00
TOTAL	£430,552.45

Appendix Five – Agencies within our partnership

Safeguarding Partners
Kent County Council Kent and Medway NHS Integrated Care Board Kent Police
Education
16-19 Academies Alternative provision academies Governing bodies of maintained schools Governing bodies of maintained nursery schools Governing bodies of pupil referral units Independent educational institutions Schools approved under section 342 of the Education Act 1996(e) - SEND Special post-16 institutions Governing bodies of institutions within the further education sector Governing bodies of English higher education providers Childminders
Health provider trusts
Kent Community Health Foundation Trust (KCHFT) – community health provider Kent and Medway Partnership Trust (KMPT) – adult mental health provider North East London Foundation Trust (NELFT) – children and young people mental health provider South London and Maudsley (SLAM) – Tier 4 children and young person’s mental health service provider East Kent Hospital University Foundation Trust (EKHUFT) Maidstone and Tunbridge Wells NHS Trust (MTWNHST) Darent Valley Hospital (DVH) South East Coast Ambulance Service (SECAmbS)
Additional social care
Registered providers of adoption support services Registered providers of fostering services Registered providers of children’s homes Registered providers of residential family centres Registered providers of residential holiday schemes for disabled children
District councils
Ashford Borough Council Canterbury City Council Dartford Borough Council Dover District Council Folkestone and Hythe District Council Gravesham Borough Council Maidstone Borough Council Sevenoaks District Council

Swale Borough Council Thanet District Council Tonbridge and Malling Borough Council Tunbridge Wells Borough Council
--

Other agencies

National Probation Service (NPS) The Children and Family Court Advisory Support Service (CAFCASS) Kent Fire and Rescue Service
--

Appendix Six – Kent Safeguarding Context data references

1. 2020 Mid Year Population Estimates. Source: ONS, from Kent Analytics (KCC) (2021 figure not yet available)
2. Children living in **relative** low income families (defined as a family in low income before housing costs in the reference year). Source: DWP, from Kent Analytics (KCC)
3. Ethnic minority categories excluded are: White English, White British, Other White British, Scottish, Welsh, Cornish, Not obtained, Refused, and Not stated. Ethnic minority includes pupils classed as White Other. Source: January 2022 School Census from Management Information Unit (MIU), KCC.
4. Source: May 2022 School Census from MIU, KCC.
5. Source: MIU, KCC snapshot as at 30/09/2022
6. Source: MIU, KCC snapshot as at 30/09/2022
7. Number of young people at high risk of child exploitation (number of young people who have had a risk of CSE identified Oct 21-Sep 22) split by involvement with Early Help or Children's Social Work Services. Source: MIU, KCC.
8. Source: MIU, KCC snapshot as at 14/10/2022
9. Number of Children & Families (C&F) assessments where one of the factors identified was young carers (Oct 21- Sept 22). Source: MIU, KCC.
10. Source: MIU, KCC snapshot as a 30/09/2022
11. Number of C&F assessments where domestic abuse was identified as a factor of the assessment, broken down into 3 categories (Domestic Violence-Child, Domestic Violence – Parent, Domestic Violence – Other) (Oct 21-Sept 22). Source: MIU, KCC.
12. Source: MIU, KCC snapshot as at 30/02/2022
13. Number of missing episodes – open to Childrens' Social Work, Early Help, Other Local Authority or not known (totalled). Source MIU, KCC.
14. Referrals are for the NELFT single point of access and include referrals to Kent Children and Young People's Mental Health Service and the Neurodevelopment Diagnostic Assessment Service. (This figure includes Crisis, Neuro and Locality together.) NELFT are one of four providers of ND assessments in Kent, and provide them for 11+ in West and North Kent and 8+ in East Kent. Referral data is across Kent in the 12 months up to August 2022. Source: North East London Foundation Trust (NELFT).
15. Breakdown of Youth Justice Caseload population (snapshot). Source: MIU, KCC snapshot as at September 2022.

16. Number of referrals to Family Group Conferencing (now renamed to Social Connections Service) by families and individuals received between Oct 2021 and Sept 2022. Source: MIU, KCC